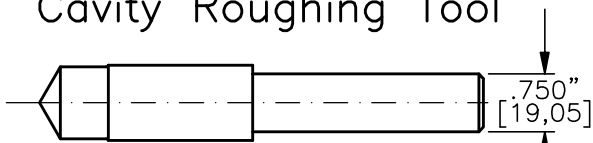


FINISH  $\sqrt{\text{ }} = 1,15m \sqrt{\text{ }} \text{ OR } 45in \sqrt{\text{ }}$

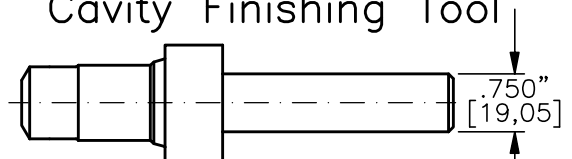
$\Phi$  THESE DIAMETERS MUST BE CONCENTRIC WITH EACH OTHER AND PERPENDICULAR TO THE SPOTFACE WITHIN .001" [0,025].

### Cavity Roughing Tool



TOOL NO.: T1220-R-H  
MATERIAL: High Speed Steel

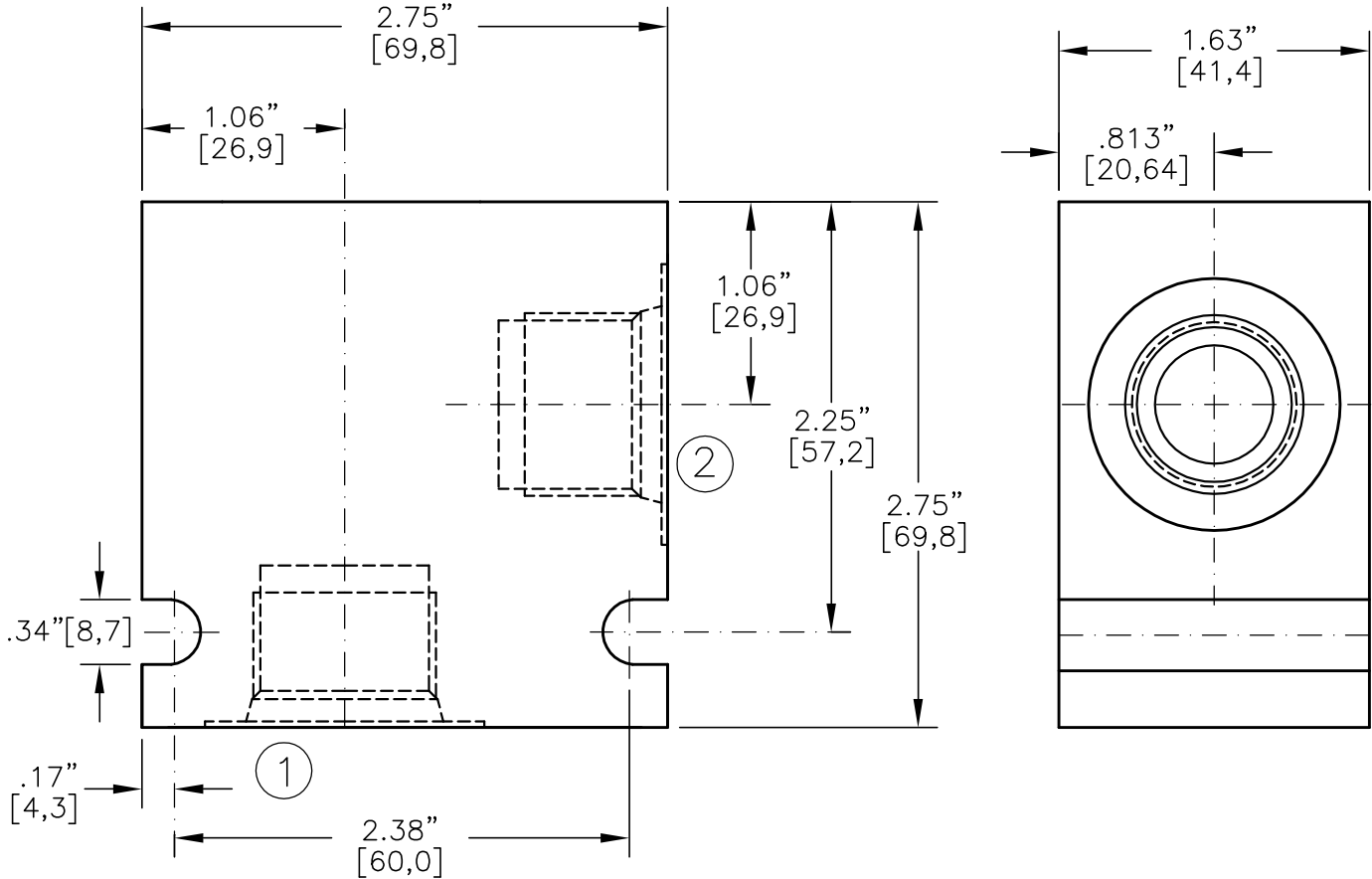
### Cavity Finishing Tool



TOOL NO.: T1220-F-H  
MATERIAL: High Speed Steel  
TOOL NO.: T1220-F-C  
MATERIAL: Tungsten Carbide Tipped



VALVE HOUSING, ALUMINUM OR STEEL.



\* CONSULT FACTORY FOR HOUSINGS WITH NPTF PIPE THREADS

CODE	ALUMINUM HOUSING	CODE	STEEL HOUSING	PORT 1	PORT 2
04PA*	30092	04PS*	30098	1/2"-14 NPTF	1/2"-14 NPTF
06PA*	30093	06PS*	30099	3/4"-14 NPTF	3/4"-14 NPTF
04BA	30094	04BS	30100	G 1/2"-14 BSPP	G 1/2"-14 BSPP
06BA	30095	06BS	30101	G 3/4"-14 BSPP	G 3/4"-14 BSPP
10TA	30096	10TS	30102	SAE - 10	SAE - 10
12TA	30097	12TS	30103	SAE - 12	SAE - 12