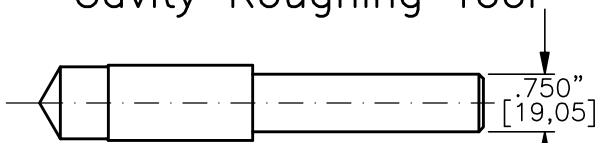


FINISH  $\sqrt{\quad} = 1,15m \sqrt{\quad}$  OR  $45in \sqrt{\quad}$

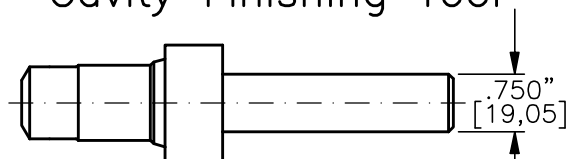
$\Phi$  THESE DIAMETERS MUST BE CONCENTRIC WITH EACH OTHER AND PERPENDICULAR TO THE SPOTFACE WITHIN .001" [0,025].

### Cavity Roughing Tool



TOOL NO.: T1620-R-H  
MATERIAL: High Speed Steel

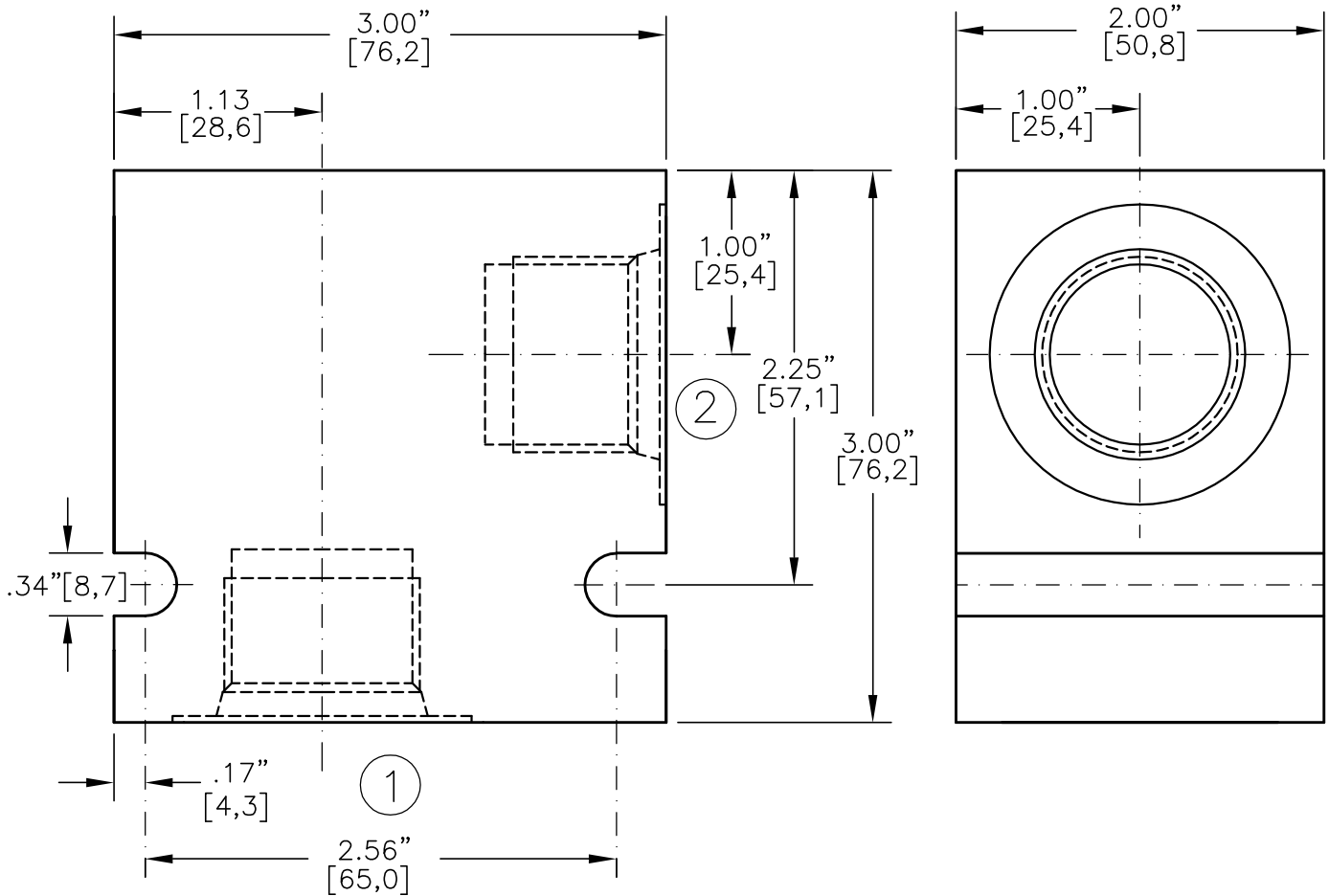
### Cavity Finishing Tool



TOOL NO.: T1620-F-H  
MATERIAL: High Speed Steel  
TOOL NO.: T1620-F-C  
MATERIAL: Tungston Carbide Tipped



VALVE HOUSING, ALUMINUM OR STEEL.



\* CONSULT FACTORY FOR HOUSINGS WITH NPTF PIPE THREADS

CODE	ALUMINUM HOUSING	CODE	STEEL HOUSING	PORT 1	PORT 2
06PA*	30192	06PS*	30198	3/4"-14 NPTF	3/4"-14 NPTF
08PA*	30193	08PS*	30199	1"-11.5 NPTF	1"-11.5 NPTF
06BA	30194	06BS	30200	G 3/4"-14 BSPP	G 3/4"-14 BSPP
08BA	30195	08BS	30201	G 1"-11 BSPP	G 1"-11 BSPP
12TA	30196	12TS	30202	SAE - 12	SAE - 12
16TA	30197	16TS	30203	SAE - 16	SAE - 16