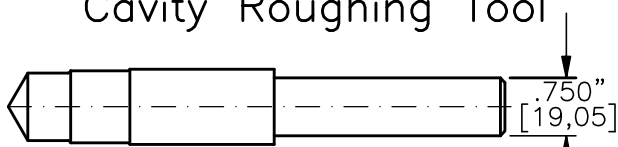


FINISH $\sqrt{\text{ }} = 1,15\text{m}$ $\sqrt{\text{ }} \text{ OR } 45\text{in}$ $\sqrt{\text{ }}$

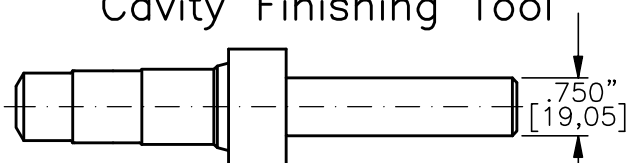
Φ THESE DIAMETERS MUST BE CONCENTRIC WITH EACH OTHER AND PERPENDICULAR TO THE SPOTFACE WITHIN $.001''$ [0,025].

Cavity Roughing Tool



TOOL NO.: T1025-R-H
MATERIAL: High Speed Steel

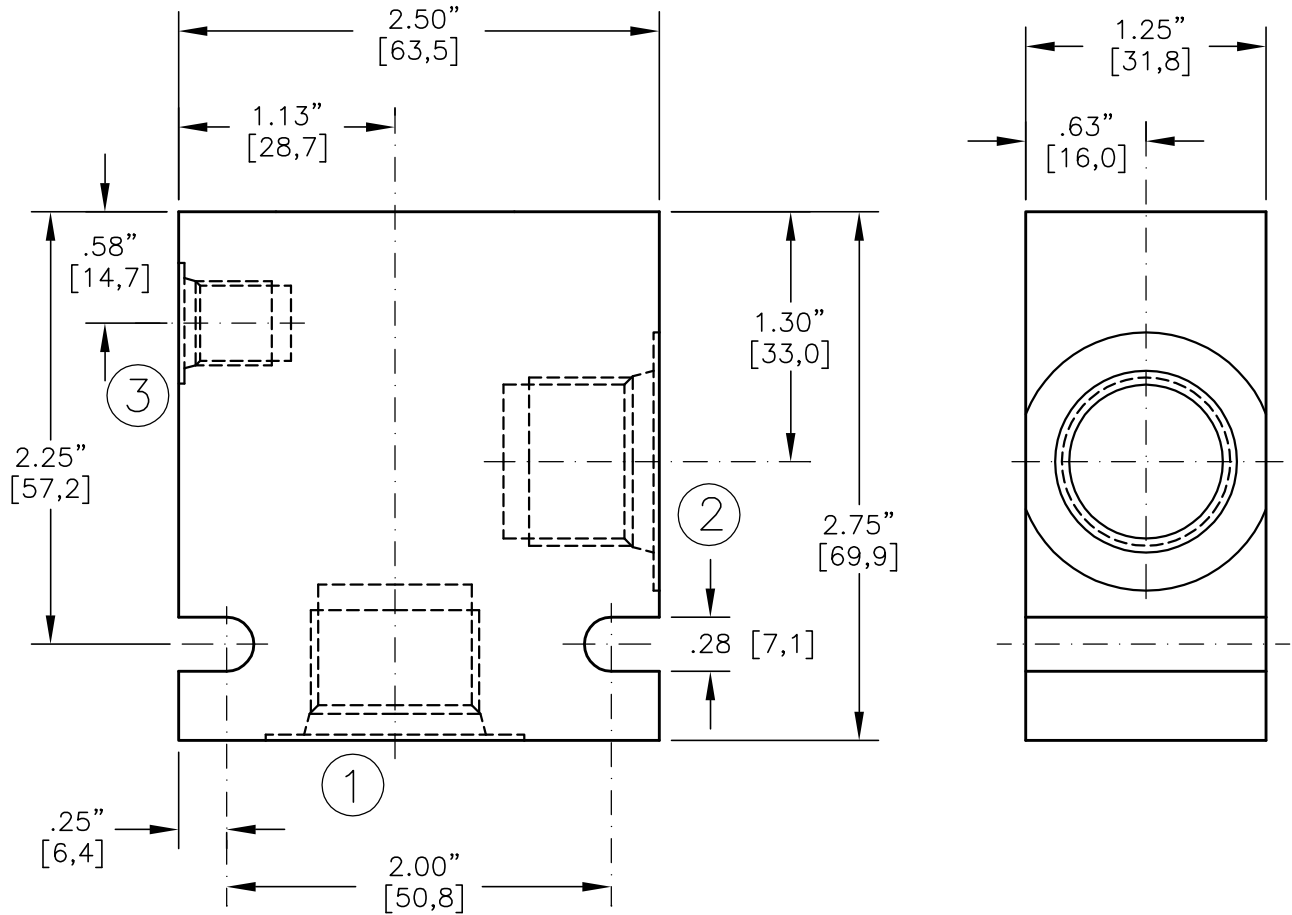
Cavity Finishing Tool



TOOL NO.: T1025-F-H
MATERIAL: High Speed Steel
TOOL NO.: T1025-F-C
MATERIAL: Tungsten Carbide Tipped



VALVE HOUSING, ALUMINUM OR STEEL.



* CONSULT FACTORY FOR HOUSINGS WITH NPTF PIPE THREADS

CODE	ALUMINUM HOUSING	CODE	STEEL HOUSING	PORT 1	PORT 2	PORT 3
03PA*	30132	03PS*	30138	3/8"–18 NPTF	3/8"–18 NPTF	1/4–18 NPTF
04PA*	30133	04PS*	30139	1/2"–14 NPTF	1/2"–14 NPTF	1/4–18 NPTF
03BA	30134	03BS	30140	G 3/8"–19 BSPP	G 3/8"–19 BSPP	1/4–19 BSPP
04BA	30135	04BS	30141	G 1/2"–14 BSPP	G 1/2"–14 BSPP	1/4–19 BSPP
08TA	30136	08TS	30142	SAE – 8	SAE – 8	SAE – 4
10TA	30137	10TS	30143	SAE – 10	SAE – 10	SAE – 4