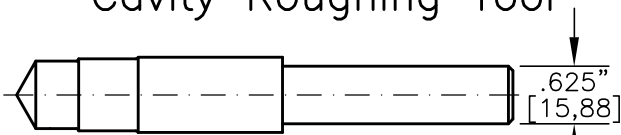


FINISH  $\sqrt{\quad} = 1,15m \sqrt{\quad}$  OR  $45in \sqrt{\quad}$

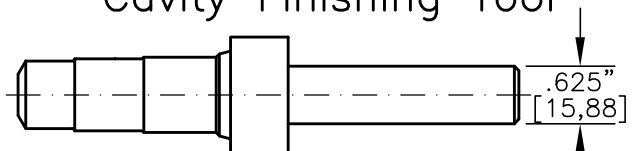
Φ THESE DIAMETERS MUST BE CONCENTRIC WITH EACH OTHER AND PERPENDICULAR TO THE SPOTFACE WITHIN .001" [0,025].

### Cavity Roughing Tool



TOOL NO.: T0830-R-H  
MATERIAL: High Speed Steel

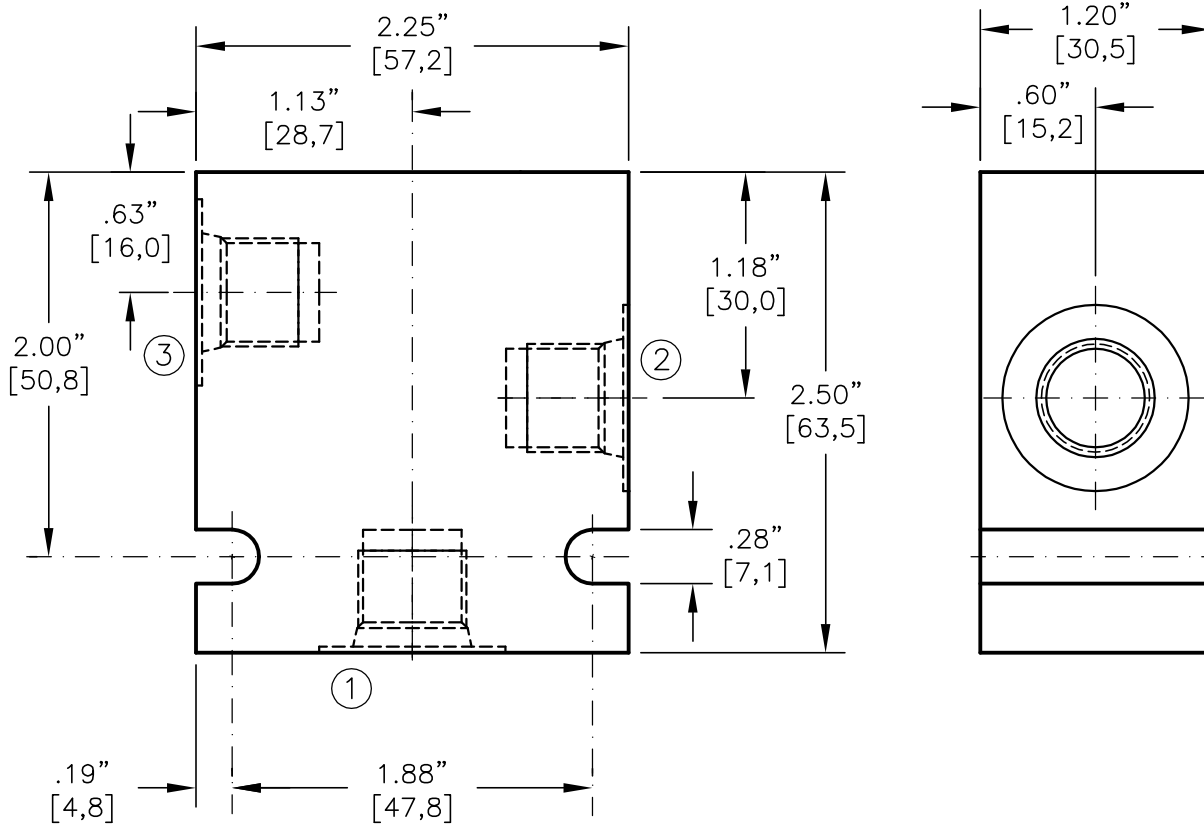
### Cavity Finishing Tool



TOOL NO.: T0830-F-H  
MATERIAL: High Speed Steel  
TOOL NO.: T0830-F-C  
MATERIAL: Tungsten Carbide Tipped



VALVE HOUSING, ALUMINUM OR STEEL.



\* CONSULT FACTORY FOR HOUSINGS WITH NPTF PIPE THREADS

CODE	ALUMINUM HOUSING	CODE	STEEL HOUSING	PORT 1	PORT 2	PORT 2
02PA*	30406	02PS*	30418	1/4"-18 NPTF	1/4"-18 NPTF	1/4"-18 NPTF
02BA	30407	02BS	30419	G 1/4"-19 BSPP	G 1/4"-19 BSPP	G 1/4"-19 BSPP
06TA	30408	06TS	30420	SAE - 6	SAE - 6	SAE - 6