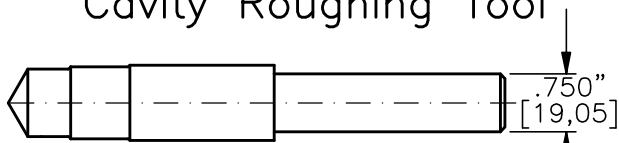


FINISH  $\sqrt{\text{ }} = 1,15\text{m}\sqrt{\text{ }} \text{ OR } 45\text{in}\sqrt{\text{ }}$

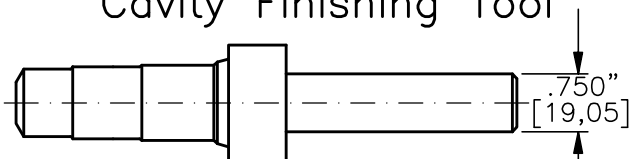
$\phi$  THESE DIAMETERS MUST BE CONCENTRIC WITH EACH OTHER AND PERPENDICULAR TO THE SPOTFACE WITHIN .001" [0,025].

### Cavity Roughing Tool



TOOL NO.: T1230-R-H  
MATERIAL: High Speed Steel

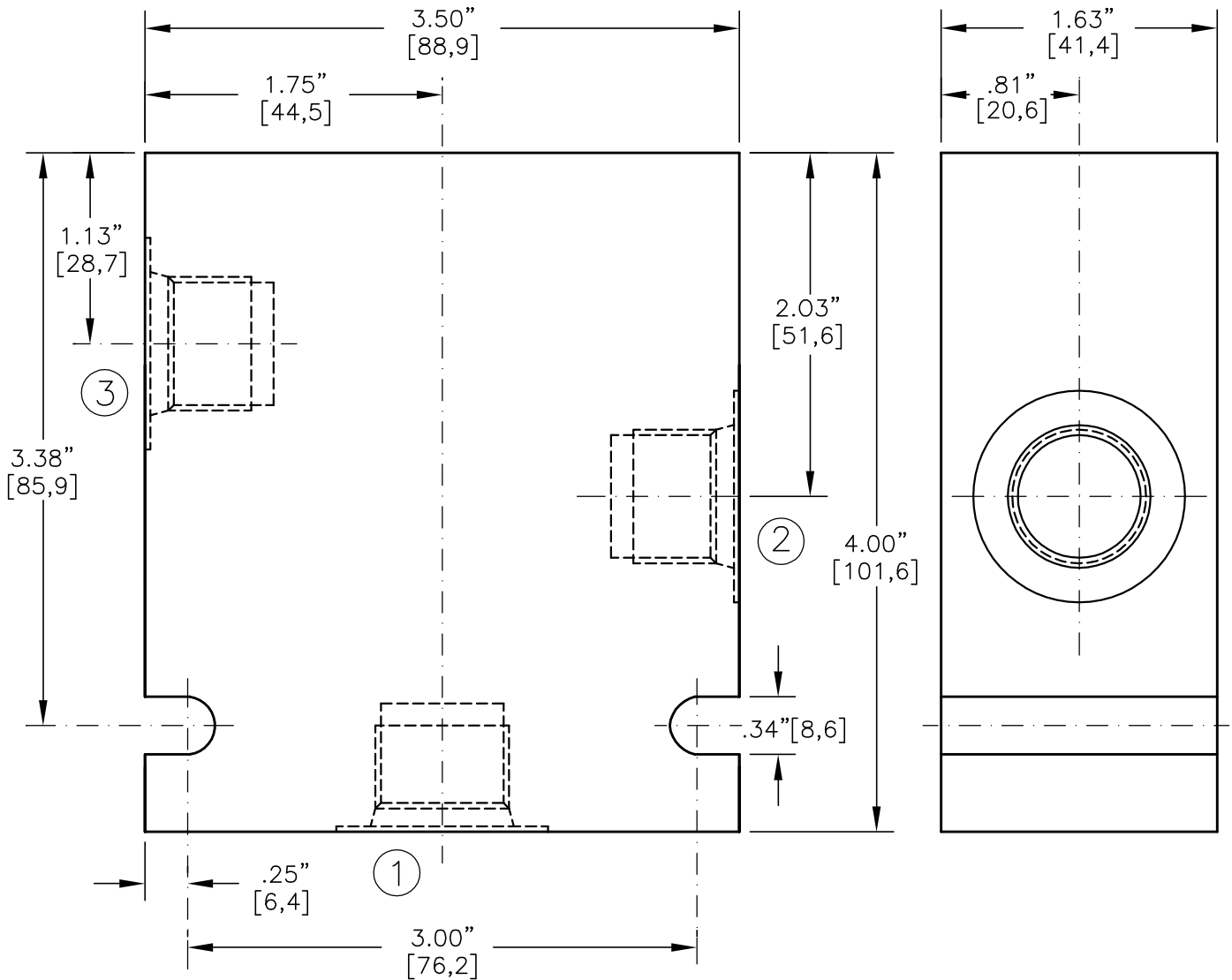
### Cavity Finishing Tool



TOOL NO.: T1230-F-H  
MATERIAL: High Speed Steel  
TOOL NO.: T1230-F-C  
MATERIAL: Tungsten Carbide Tipped



VALVE HOUSING, ALUMINUM OR STEEL.



\* CONSULT FACTORY FOR HOUSINGS WITH NPTF PIPE THREADS

CODE	ALUMINUM HOUSING	CODE	STEEL HOUSING	PORT 1	PORT 2	PORT 3
04PA*	30156	04PS*	30162	1/2"-14 NPTF	1/2"-14 NPTF	1/2"-14 NPTF
06PA*	30157	06PS*	30163	3/4"-14 NPTF	3/4"-14 NPTF	3/4"-14 NPTF
04BA	30158	04BS	30164	G 1/2"-14 BSPP	G 1/2"-14 BSPP	G 1/2"-14 BSPP
06BA	30159	06BS	30165	G 3/4"-14 BSPP	G 3/4"-14 BSPP	G 3/4"-14 BSPP
10TA	30160	10TS	30166	SAE - 10	SAE - 10	SAE - 10
12TA	30161	12TS	30167	SAE - 12	SAE - 12	SAE - 12