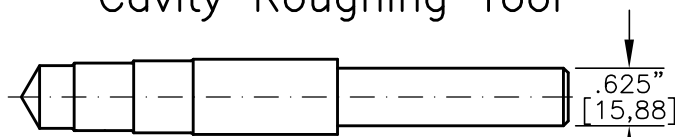


FINISH $\sqrt{\quad} = 1,15m\sqrt{\quad}$ OR 45in $\sqrt{\quad}$

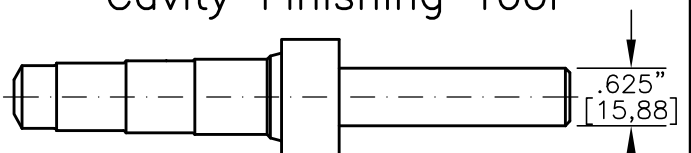
Φ THESE DIAMETERS MUST BE CONCENTRIC WITH EACH OTHER AND PERPENDICULAR TO THE SPOTFACE WITHIN .001"[0,025].

Cavity Roughing Tool



TOOL NO.: T0840-R-H
MATERIAL: High Speed Steel

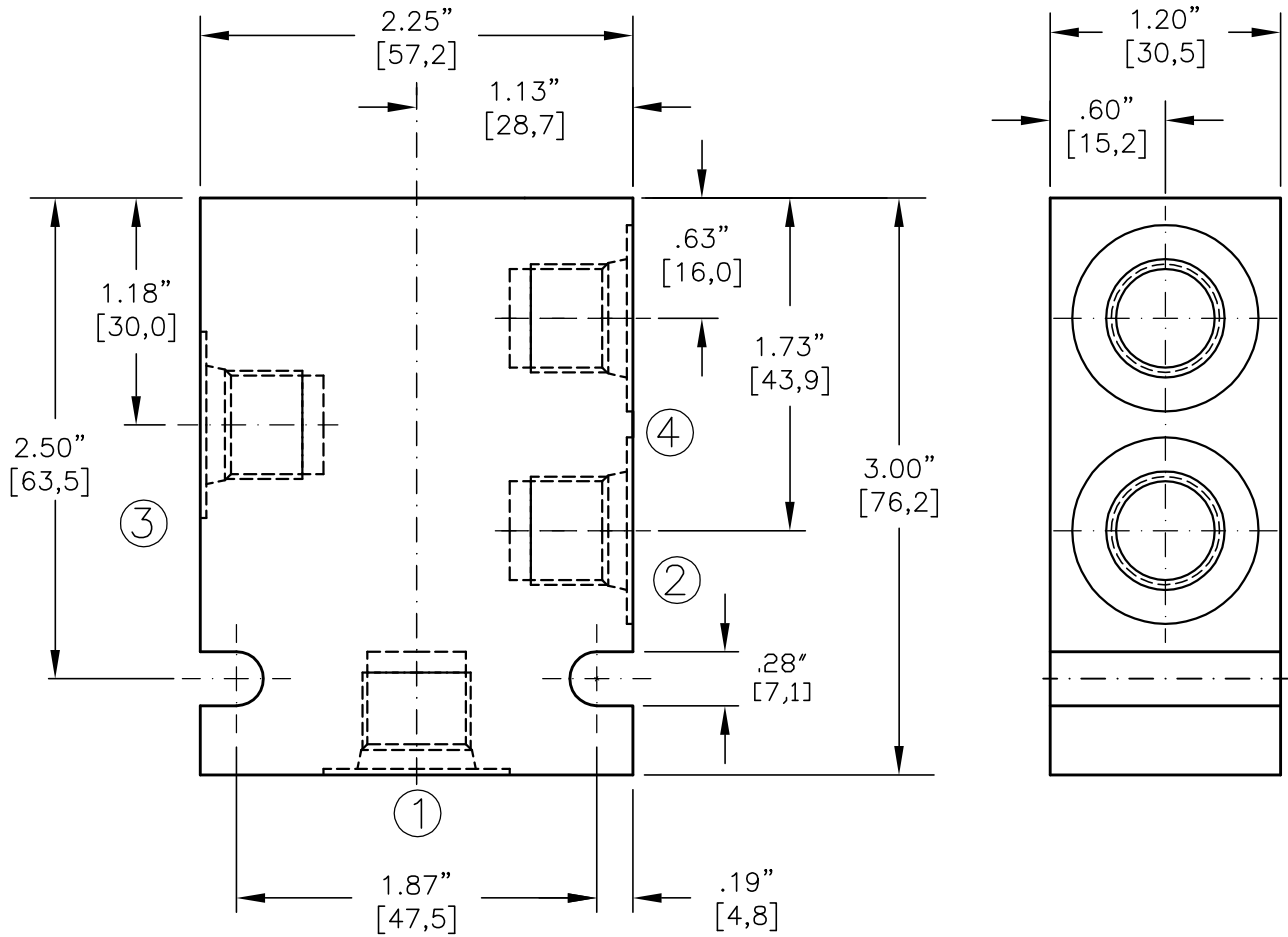
Cavity Finishing Tool



TOOL NO.: T0840-F-H
MATERIAL: High Speed Steel
TOOL NO.: T0840-F-C
MATERIAL: Tungsten Carbide Tipped



VALVE HOUSING, ALUMINUM OR STEEL.

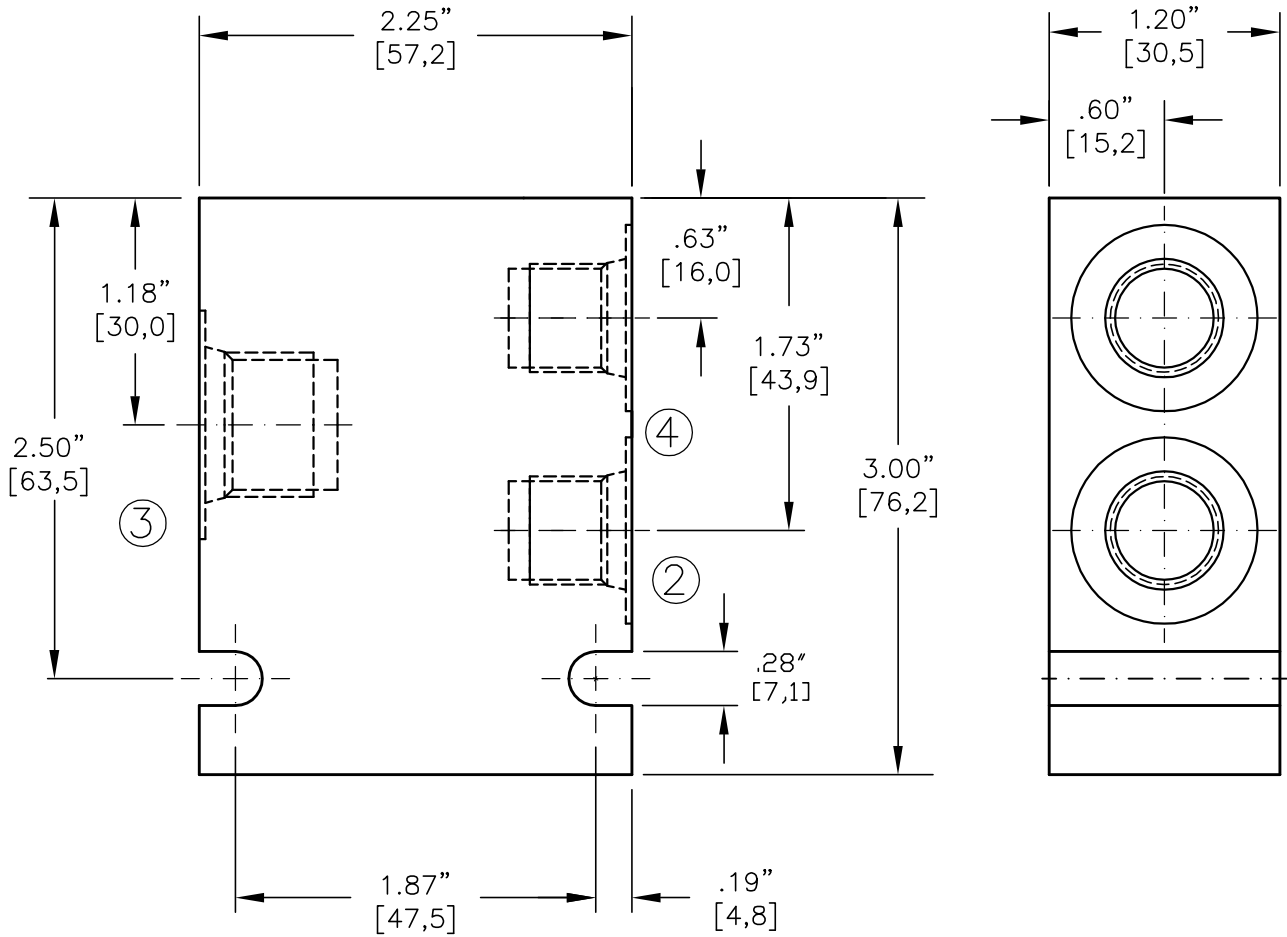


* CONSULT FACTORY FOR HOUSINGS WITH NPTF PIPE THREADS

CODE	ALUMINUM HOUSING	CODE	STEEL HOUSING	PORT 1	PORT 2	PORT 3	PORT 4
02PA*	30409	02PS*	30421	1/4"-18 NPTF	1/4"-18 NPTF	1/4"-18 NPTF	1/4"-18 NPTF
02BA	30410	02BS	30422	G 1/4"-19 BSPP	G 1/4"-19 BSPP	G 1/4"-19 BSPP	G 1/4"-19 BSPP
06TA	30411	06TS	30423	SAE - 6	SAE - 6	SAE - 6	SAE - 6



VALVE HOUSING, ALUMINUM OR STEEL.
4-WAY FLOW DIVIDER/COMBINER



IN CERTAIN SITUATIONS THE STANDARD 4-WAY BODY SHOWN ON THE PRECEDING PAGE MAY BE USED IF PORT 1 IS PLUGGED. NOTE THE STANDARD BODY HAS ALL THE SAME SIZED PORTS WHILE THE FLOW DIVIDER/COMBINER BODY SHOWN HERE DOES NOT.

* CONSULT FACTORY FOR HOUSINGS WITH NPTF PIPE THREADS

CODE	ALUMINUM HOUSING	CODE	STEEL HOUSING	PORT 1	PORT 2	PORT 3	PORT 4
03PA*	30424	03PS*	30427	NONE	1/4"-18 NPTF	3/8"-18 NPTF	1/4"-18 NPTF
03BA	30425	03BS	30428	NONE	G 1/4"-19 BSPP	G 3/8"-19 BSPP	G 1/4"-19 BSPP
08TA	30426	08TS	30429	NONE	SAE - 6	SAE - 8	SAE - 6