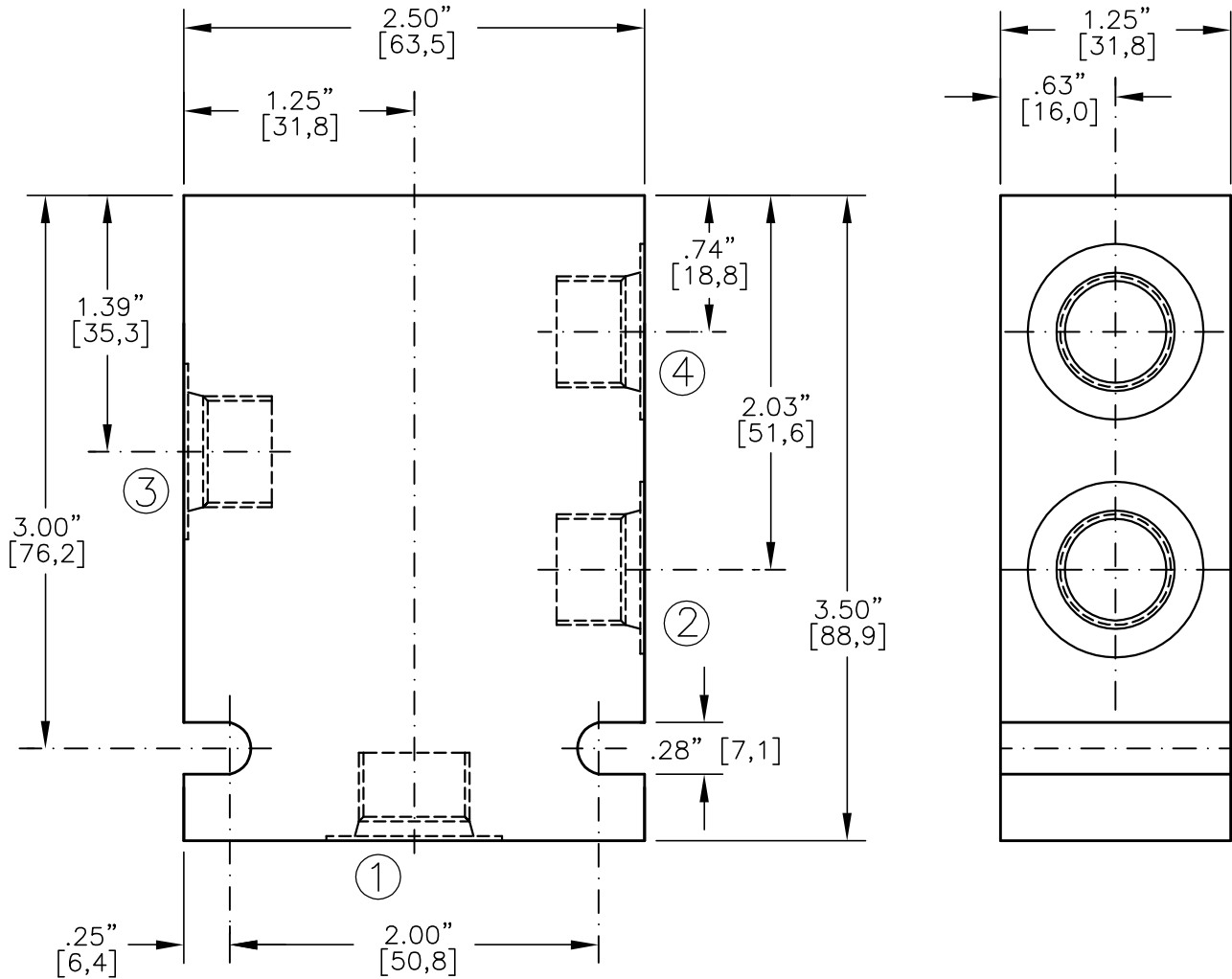




VALVE HOUSING, ALUMINUM OR STEEL.

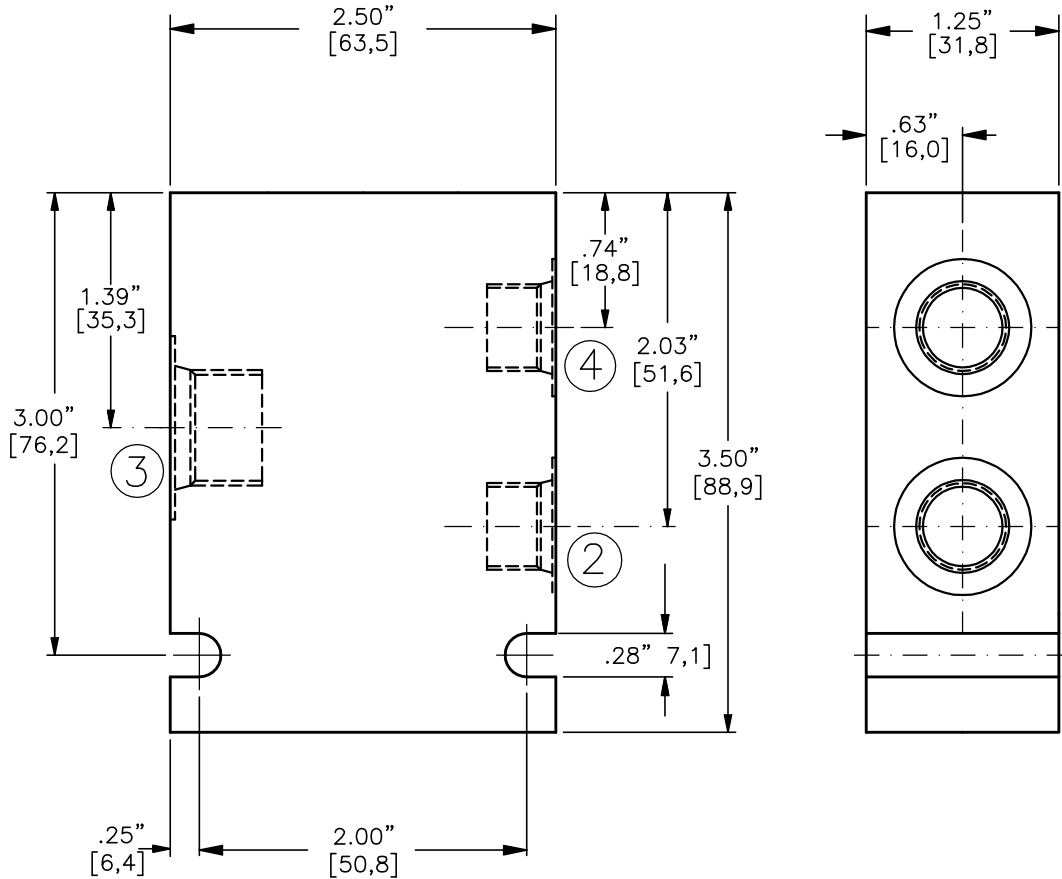


* CONSULT FACTORY FOR HOUSINGS WITH NPTF PIPE THREADS

CODE	ALUMINUM HOUSING	CODE	STEEL HOUSING	PORT 1	PORT 2	PORT 3	PORT 4
02PA*	30168	02PS*	30174	1/4"-18 NPTF	1/4"-18 NPTF	1/4"-18 NPTF	1/4"-18 NPTF
03PA*	30169	03PS*	30175	3/8"-18 NPTF	3/8"-18 NPTF	3/8"-18 NPTF	3/8"-18 NPTF
02BA	30170	02BS	30176	G 1/4"-19 BSPP	G 1/4"-19 BSPP	G 1/4"-19 BSPP	G 1/4"-19 BSPP
03BA	30171	03BS	30177	G 3/8"-19 BSPP	G 3/8"-19 BSPP	G 3/8"-19 BSPP	G 3/8"-19 BSPP
06TA	30172	06TS	30178	SAE - 6	SAE - 6	SAE - 6	SAE - 6
08TA	30173	08TS	30179	SAE - 8	SAE - 8	SAE - 8	SAE - 8



VALVE HOUSING, ALUMINUM OR STEEL.
FOR FLOW DIVIDER/COMBINER VALVE.



IN CERTAIN SITUATIONS THE STANDARD 4-WAY BODY SHOWN ON THE PRECEDING PAGE MAY BE USED IF PORT 1 IS PLUGGED. NOTE THE STANDARD BODY HAS ALL THE SAME SIZED PORTS WHILE THE FLOW DIVIDER/COMBINER BODY SHOWN HERE DOES NOT.

* CONSULT FACTORY FOR HOUSINGS WITH NPTF PIPE THREADS

CODE	ALUMINUM HOUSING	CODE	STEEL HOUSING	PORT 1	PORT 2	PORT 3	PORT 4
03PA*	30228	03PS*	30234	NONE	1/4"-18 NPTF	3/8"-18 NPTF	1/4"-18 NPTF
04PA*	30229	04PS*	30235	NONE	3/8"-18 NPTF	1/2"-14 NPTF	3/8"-18 NPTF
03BA	30230	03BS	30236	NONE	G 1/4"-19 BSPP	G 3/8"-19 BSPP	G 1/4"-19 BSPP
04BA	30231	04BS	30237	NONE	G 3/8"-19 BSPP	G 1/2"-14 BSPP	G 3/8"-19 BSPP
08TA	30232	08TS	30238	NONE	SAE - 6	SAE - 8	SAE - 6
10TA	30233	10TS	30239	NONE	SAE - 8	SAE - 10	SAE - 8