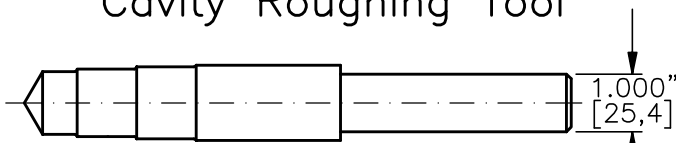


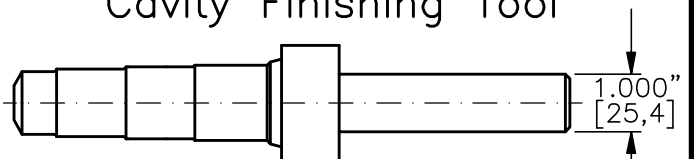
Φ THESE DIAMETERS MUST BE CONCENTRIC WITH EACH OTHER AND PERPENDICULAR TO THE SPOTFACE WITHIN .001"[0,025].

Cavity Roughing Tool



TOOL NO.: T1640-R-H
MATERIAL: High Speed Steel

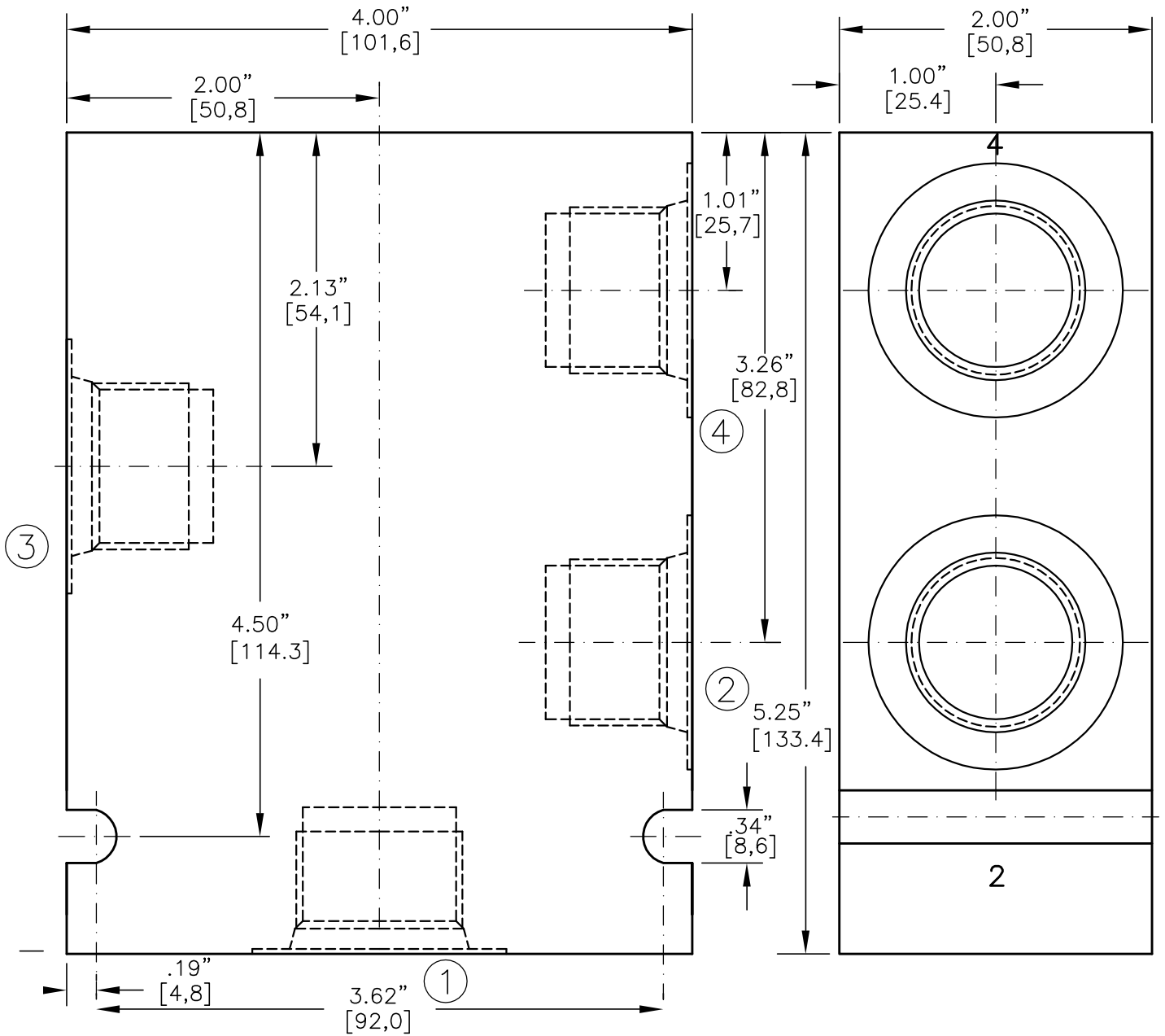
Cavity Finishing Tool



TOOL NO.: T1640-F-H
MATERIAL: High Speed Steel
TOOL NO.: T1640-F-C
MATERIAL: Tungsten Carbide Tipped



VALVE HOUSING, ALUMINUM OR STEEL.



* CONSULT FACTORY FOR HOUSINGS WITH NPTF PIPE THREADS

CODE	ALUMINUM HOUSING	CODE	STEEL HOUSING	PORT 1	PORT 2	PORT 3	PORT 4
06PA*	30216	06PS*	30222	3/4"-14 NPTF	3/4"-14 NPTF	3/4"-14 NPTF	3/4"-14 NPTF
08PA*	30217	08PS*	30223	1"-11.5 NPTF	1"-11.5 NPTF	1"-11.5 NPTF	1"-11.5 NPTF
06BA	30218	06BS	30224	G 3/4"-14 BSPP	G 3/4"-14 BSPP	G 3/4"-14 BSPP	G 3/4"-14 BSPP
08BA	30219	08BS	30225	G 1"-11 BSPP	G 1"-11 BSPP	G 1"-11 BSPP	G 1"-11 BSPP
12TA	30220	12TS	30226	SAE - 12	SAE - 12	SAE - 12	SAE - 12
16TA	30221	16TS	30227	SAE - 16	SAE - 16	SAE - 16	SAE - 16