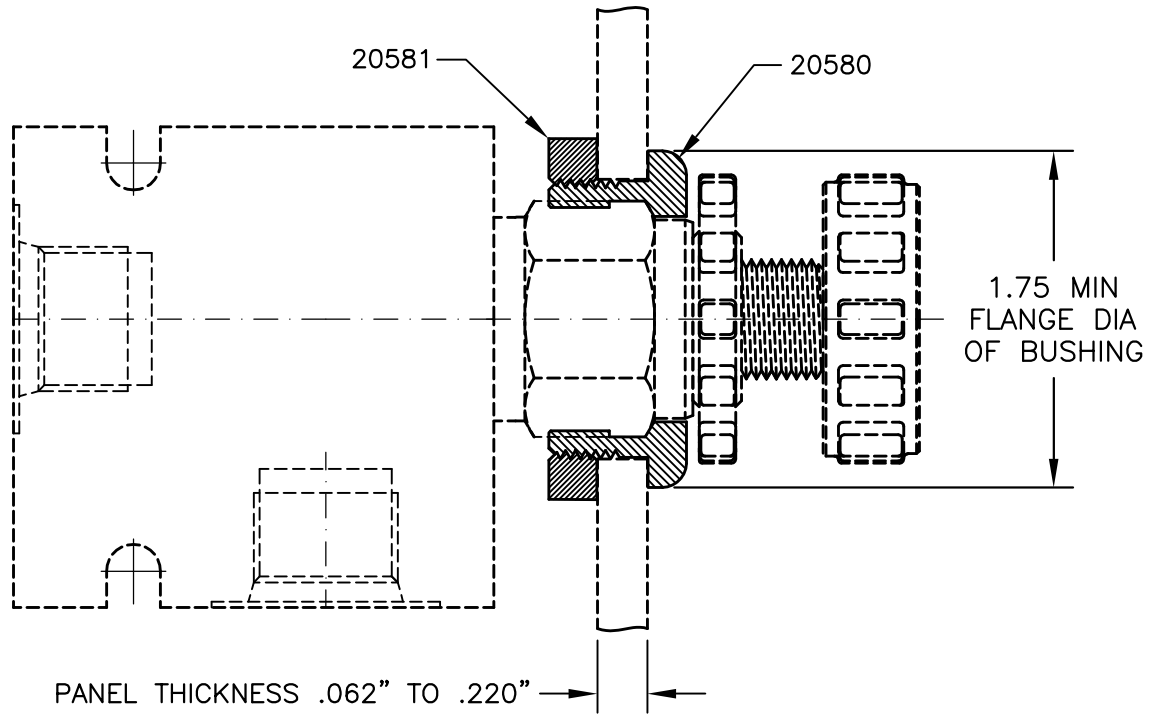




# PANEL MOUNT KIT #60134



THIS PANEL MOUNT KIT WILL FIT ALL OF COMMAND CONTROLS CORP. SERIES # 10 VALVES.

## INSTALLATION INSTRUCTIONS:

1. MOUNTING HOLE DIAMETER = 1.456" MIN
2. INSERT PANEL MOUNT BUSHING #20580 INTO THE HOLE FROM THE FRONT OF THE PANEL.
3. SCREW ON PANEL MOUNT JAM NUT #20581 ON THE BUSHING FROM THE BACK OF THE PANEL BUT DO NOT TIGHTEN.
4. REMOVE THE KNOB(S) FROM THE VALVE IF KNOB(S) ARE PROVIDED.
5. INSERT THE VALVE INTO THE PANEL MOUNT KIT FROM THE BACK OF THE PANEL. MAKE SURE THE CORNERS OF THE VALVE HEX. FIT INTO THE THE SLOTS IN THE PANEL MOUNT BUSHING.
6. ORIENT THE VALVE TO A DESIRED POSITION THEN TIGHTEN THE JAM NUT WRENCH AT-132 UNTIL THE VALVE AND THE PANEL MOUNTING KIT ARE SECURELY FASTENED.



PANEL MOUNT KIT WRENCH #AT-132

