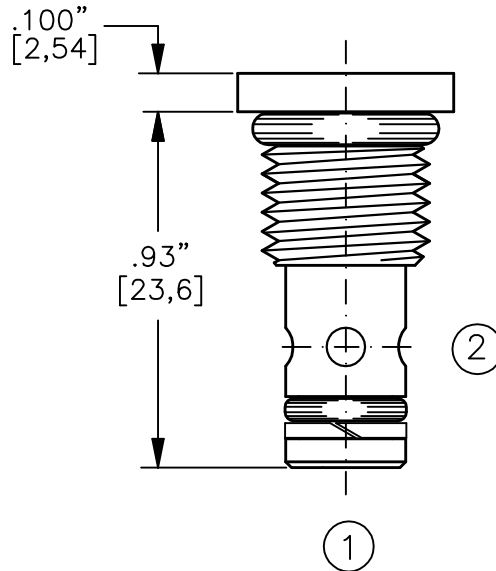
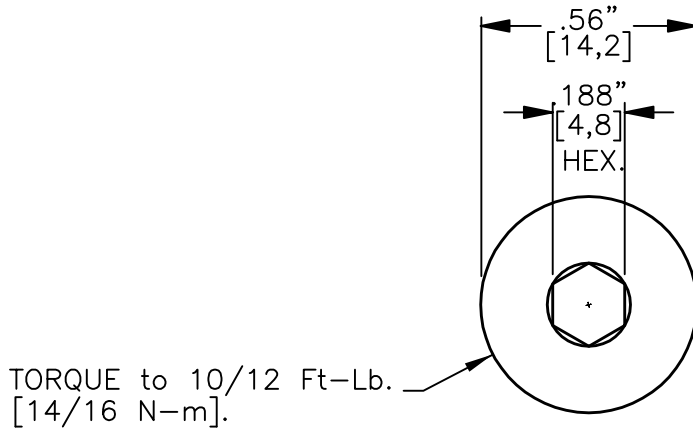
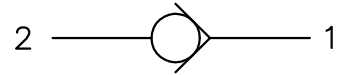




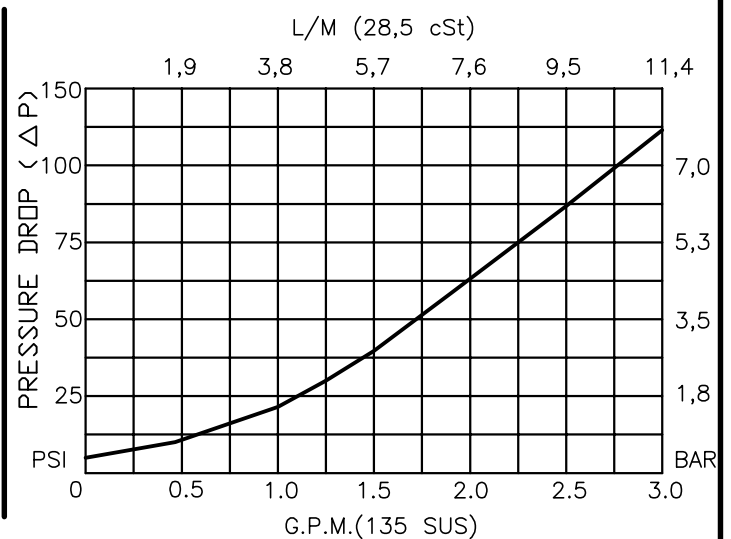
CHECK VALVE FORWARD GUIDED BALL



CVFB-04-X-0-XXX

- BASIC
- SIZE  
04 = 7/16"-20 UNF
- SEALS  
N = BUNA "N"  
V = VITON
- PORTS  
0 = CARTRIDGE ONLY  
(NO HOUSING OFFERED)

CRACK PRESSURE  
005 = 5 PSI



1-030.0



## CHECK VALVE FORWARD GUIDED BALL

### DESCRIPTION

This unit is a SCREW IN, cartridge type, guided ball, hydraulic check valve, for use as a blocking or load holding device for high pressure applications.

### OPERATIONS

This valve allows free flow from port 1 to port 2 and blocks flow from port 2 to port 1 or holding a load.

### FEATURES AND BENEFITS

All external carbon steel parts are plated for longer life against the elements. All cartridge valves are 100% functionally tested.

### SPECIFICATIONS

OPERATING PRESSURE: 5,000 PSI [350 Bar]

PROOF PRESSURE: 10,000 PSI [700 Bar]

FLOW: 2.5 GPM [9,5 l/m] nominal. See performance chart.

INTERNAL LEAKAGE: 5 drops per minute maximum @ 5,000 PSI [350 Bar]

OPERATING TEMPERATURE: -40° to +250° F. [-40° to +120° C.]

OPERATING MEDIA: All general purpose hydraulic fluids such as  
MIL-H-5606, SAE-#10, SAE-#20, etc.

INSTALLATION: No restrictions.

SEAL KIT: SKN-0421 Buna "N"

SKV-0421 Viton

WEIGHT: .08 lb [.04 kg] cartridge only.

VALVE CAVITY: #C0420.