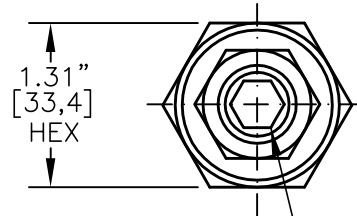
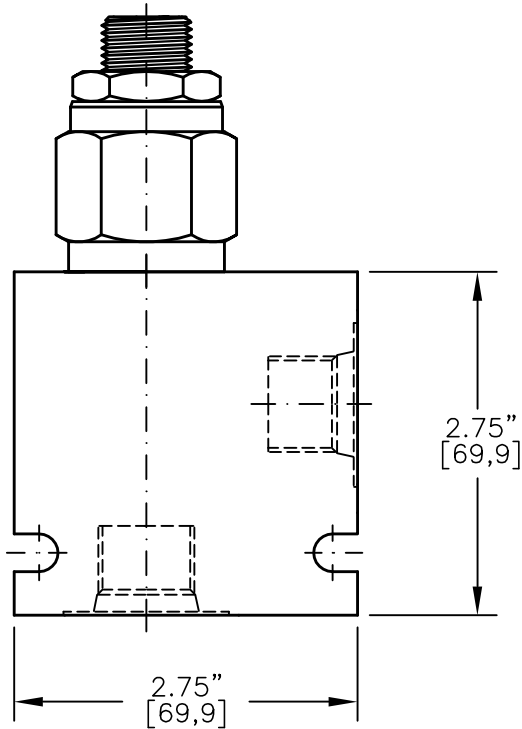
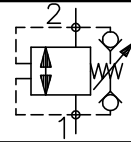
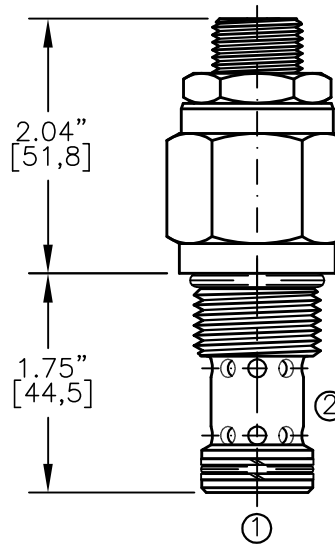




RELIEF VALVE POPPET TYPE, BI-DIRECTIONAL (CROSS-OVER)



.315" [8,0] HEX.
TORQUE to 70/75 Ft-Lb.
[95/100 N-m]

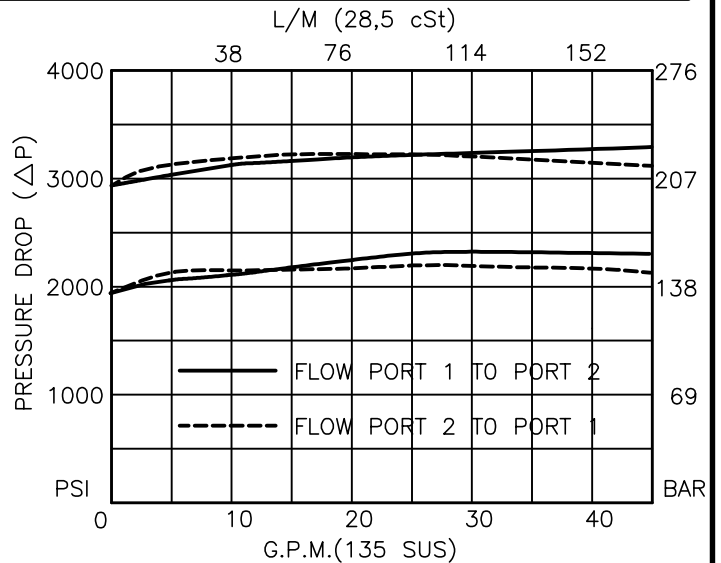


FOR ALUMINUM OR STEEL VALVE HOUSING CONFIGURATIONS SEE PAGE 0-013.1

RVBD-12-X-X-X-XX

- BASIC _____
- SIZE _____
12 = 1.062"-12 UNF
- SEALS _____
N = BUNA "N"
V = VITON
- ADJUSTMENT _____
S = ADJUSTING SCREW
C = CAPPED
T = TAMPERPROOF
- PRESSURE RANGE
15 = 100 TO 1500 PSI
30 = 300 TO 3000 PSI
50 = 500 TO 5000 PSI
- PORTS
0 = CARTRIDGE ONLY
04BX = G 1/2" BSPP
06BX = G 3/4" BSPP
10TX = SAE - #10
12TX = SAE - #12
- "A" - ALUM. HOUSING
"S" - STEEL HOUSING

FOR ADJUSTMENT CONTROL
OPTIONS SEE PAGE 0-050.0





RELIEF VALVE

POPPET TYPE, BI-DIRECTIONAL (CROSS-OVER)

DESCRIPTION

This unit is a CARTRIDGE STYLE, DIFFERENTIAL AREA, POPPET TYPE, BI-DIRECTIONAL, ADJUSTABLE, HYDRAULIC PRESSURE RELIEF VALVE.

OPERATIONS

This valve relieves from port 1 to port 2 and port 2 to port 1. This valve provides a fast response, rugged, dirt tolerant operation and has a good pressure vs. flow characteristics.

FEATURES AND BENEFITS

Leakproof screw adjustment is standard.
Adjustment screw can not be backed out of the valve.
Overset protection – spring can not go solid.
Hardened precision fitted poppet & cage provides reliable, long life.
A unibody cage construction provides very low hysteresis, dependable and reliable operation.
All external carbon steel parts are plated for longer life against the elements.
Valve is available with screw, tamperproof, capped and handknob adjustments.
All cartridge valves are 100% functionally tested.
Industry common cavity.

SPECIFICATIONS

OPERATING PRESSURE: 5,000 PSI [350 Bar]
PROOF PRESSURE: 10,000 PSI [700 Bar]
FLOW: 40.0 GPM [152 L/M] nominal. See performance chart.
INTERNAL LEAKAGE: 5 cu.in/min [85 cc/m] @ 85% of crack pressure.
DEFINITION OF CRACK: evident at 0.06 GPM [0.25 LPM]
VALVE HOUSINGS: 2500 PSI [175 Bar] = Aluminum – Anodized.
5000 PSI [350 Bar] = Steel – Unplated.
OPERATING TEMPERATURE: -40° to +250° F. [-40° to +120° C.]
OPERATING MEDIA: All general purpose hydraulic fluids such as MIL-H-5606, SAE-#10, SAE-#20, etc.
INSTALLATION: No restriction.
FILTRATION: 25 microns or better.
SEAL KIT NUMBER: SKN-1222 for buna "N".
SKV-1222 for viton.
WEIGHT: 0.68 lb [.34 kg] cartridge only.
VALVE CAVITY: #C1220, See Page 0-013.0.