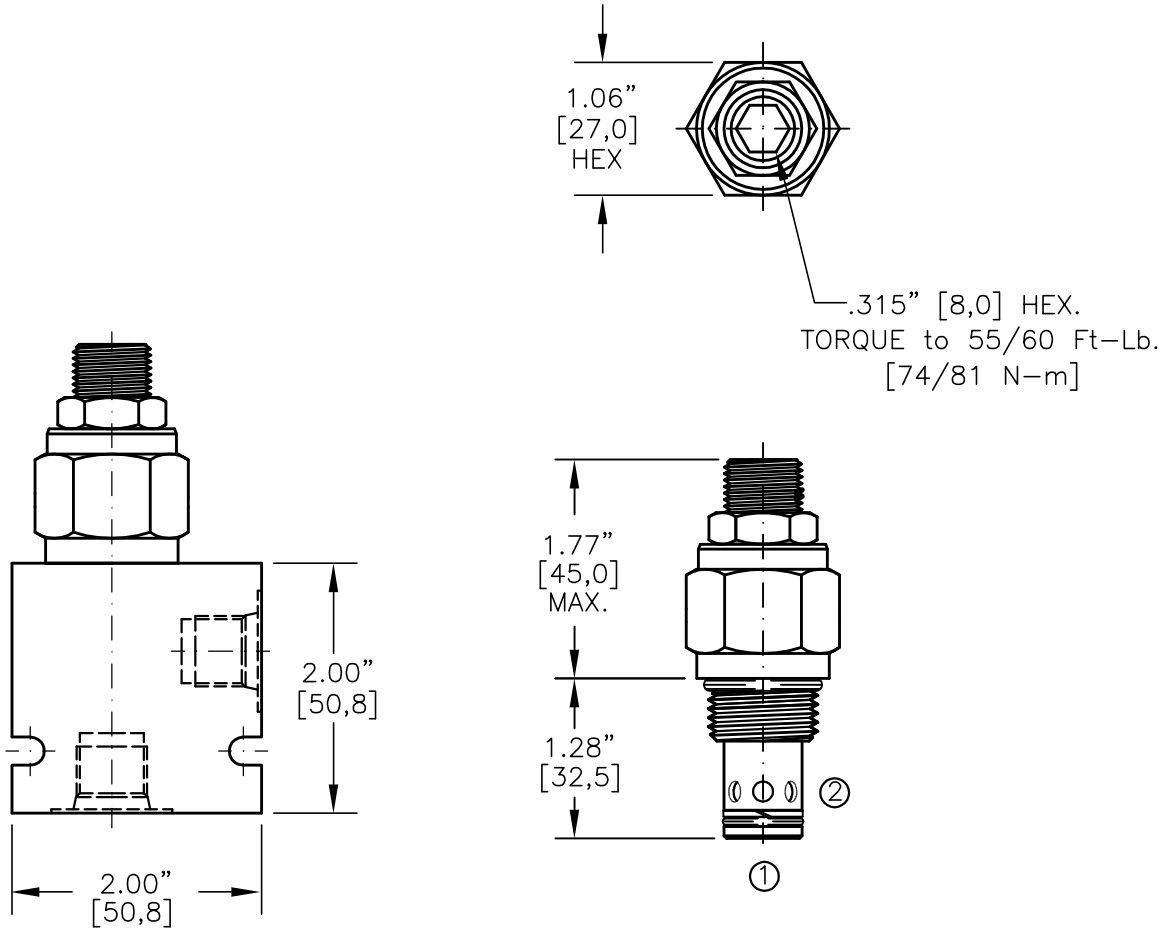
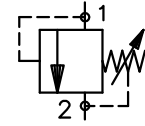
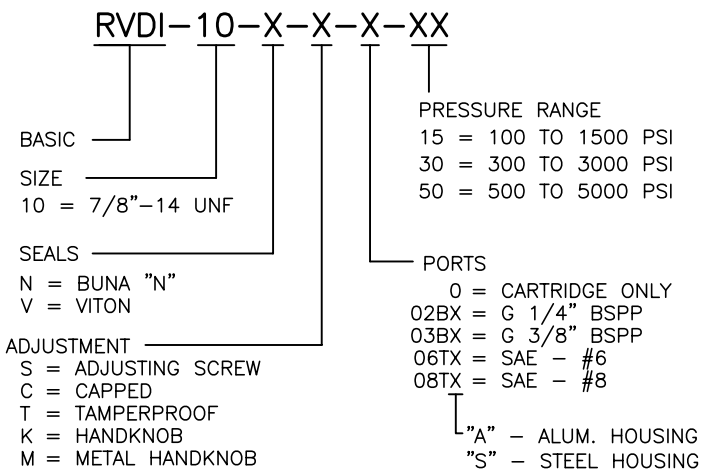




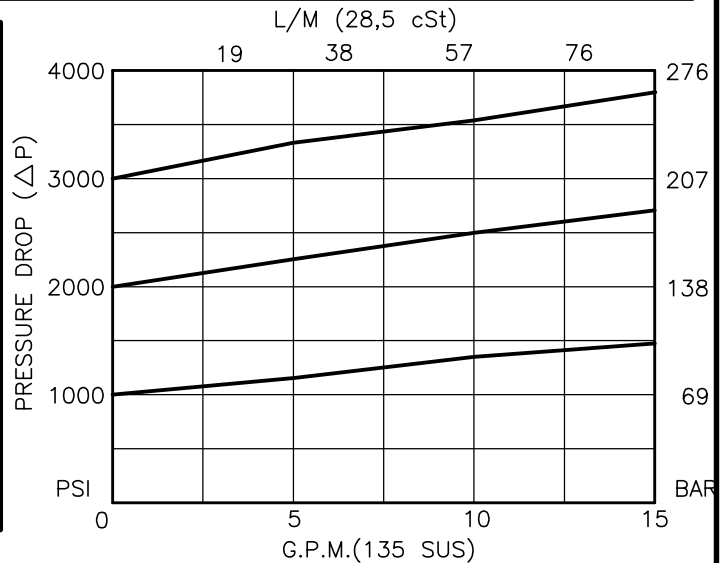
# RELIEF VALVE DIRECT ACTING, POPPET TYPE



FOR ALUMINUM OR STEEL VALVE HOUSING CONFIGURATIONS SEE PAGE 0-012.1



FOR ADJUSTMENT CONTROL  
OPTIONS SEE PAGE 0-050.0





## RELIEF VALVE DIRECT ACTING, POPPET TYPE

### DESCRIPTION

This unit is a DIRECT ACTING RELIEF VALVE, cartridge type, poppet type, low leakage, screw in type, adjustable, pressure control valve.

### OPERATIONS

This valve (RVDI) blocks flow from port #1 to port #2 until sufficient pressure is present at port #1 to force the poppet from its seat thus opening the valve.

This cartridge relief valve offers a smooth transition in response to a load change in a hydraulic circuit.

### FEATURES AND BENEFITS

Leakproof screw adjustment.

Adjustment screw can not be backed out of valve.

Overset protection – spring can not go solid.

Hardened precision fitted poppet & cage provides reliable, long life.

All external carbon steel parts are plated for longer life against the elements.

Valve is available with screw, tamperproof, capped and handknob adjustments.

All cartridge valves are 100% functionally tested.

Industry common cavity.

### SPECIFICATIONS

OPERATING PRESSURE: 5,000 PSI [350 Bar]

PROOF PRESSURE: 10,000 PSI [700 Bar]

FLOW: 10.0 GPM [38 L/M] nominal. See performance chart.

INTERNAL LEAKAGE: 5 drops/min [.25 cc/m] @ 85% of crack pressure.

DEFINITION OF CRACK: evident at 0.06 GPM [0.25 LPM]

VALVE HOUSINGS: 2500 PSI [175 Bar] = Aluminum – Anodized.

5000 PSI [350 Bar] = Steel – Unplated.

OPERATING TEMPERATURE: -40° to +250° F. [-40° to +120° C.]

OPERATING MEDIA: All general purpose hydraulic fluids such as MIL-H-5606, SAE-#10, SAE-#20, etc.

INSTALLATION: No restriction.

FILTRATION: 25 microns or better.

SEAL KIT NUMBER: SKN-1021 for Buna "N".

SKV-1021 for Viton.

WEIGHT: 0.38 lb [.17 kg] cartridge only.

VALVE CAVITY: #C1020, See Page 0-012.0.