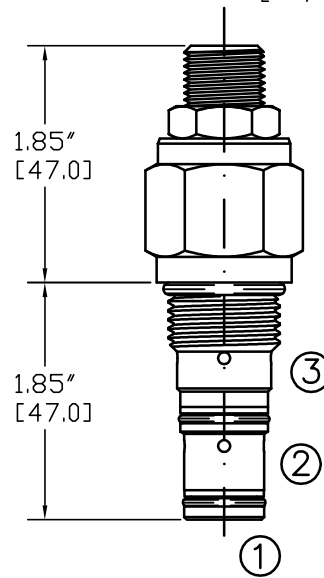
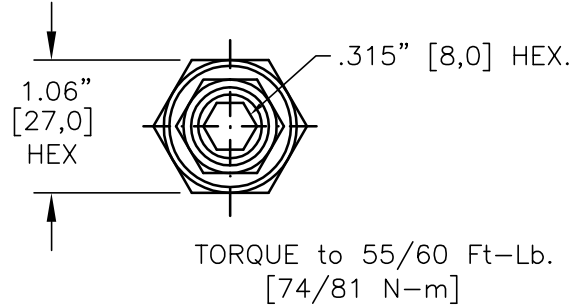
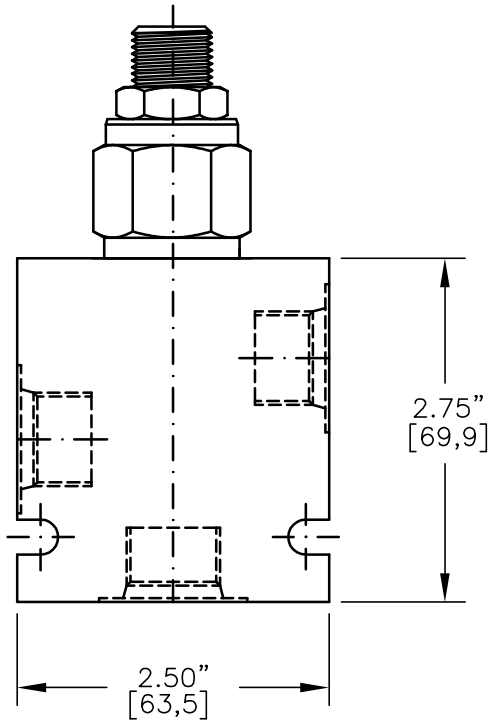
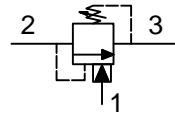




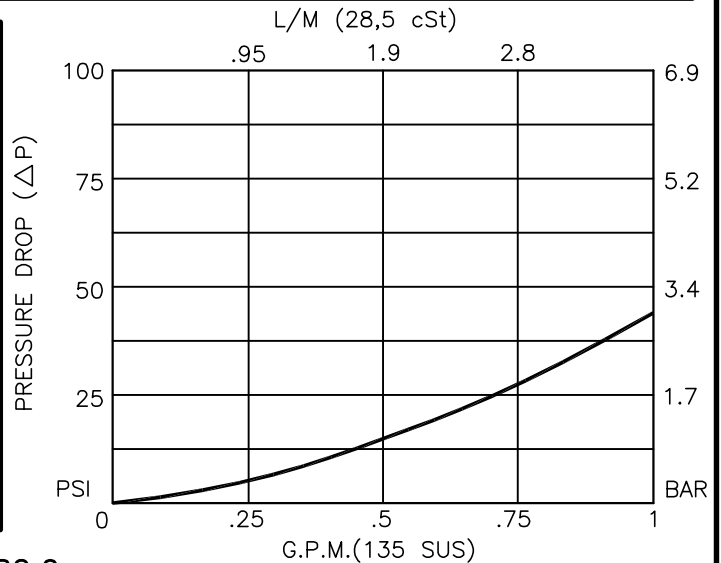
DIFFERENTIAL AREA  
UNLOADING RELIEF VALVE



FOR ALUMINUM OR STEEL VALVE HOUSING CONFIGURATIONS SEE PAGE 0-032.1

**PUVA-10-N-X-X-X-XX**

- BASIC
- SIZE  
10 = 7/8"-14 UNF
- SEALS  
N = BUNA "N"  
V = VITON
- ADJUSTMENT  
S = ADJUSTING SCREW  
C = CAPPED  
T = TAMPERPROOF  
K = HANDKNOB  
M = METAL HANDKNOB
- FOR ADJUSTMENT CONTROL  
OPTIONS SEE PAGE 0-050.0
- PRESSURE RANGE  
20 = 50 TO 2000 PSI  
40 = 50 TO 4000 PSI
- RATIO  
7 = 70%  
8 = 80%  
9 = 90%
- PORTS  
0 = CARTRIDGE ONLY  
02BX = G 1/4" BSPP  
03BX = G 3/8" BSPP  
06TX = SAE - #6  
08TX = SAE - #8
- "A" - ALUM. HOUSING  
"S" - STEEL HOUSING





## DIFFERENTIAL AREA UNLOADING RELIEF VALVE

### DESCRIPTION

This unit is a DIRECT ACTING, SCREW IN CARTRIDGE STYLE, HYDRAULIC 3-WAY, 2 POS. UNLOADING VALVE, which can be dumped or unloaded via a remote pilot signal. This valve is used as the pilot stage of a two-stage unloading valve.

### OPERATIONS

This valve provides a fixed percentage between load and unload pressures. The fixed differential area is provided by the pilot spool which has a greater area than the pilot seat. When pressure at the pilot port 1 reaches the spring setting, the valve opens and unloads pressure port 2 to tank port 3. The greater area of the spool holds the pilot poppet off its seat until pressure at pilot port 1 drops to the RATIO percentage of the spring setting, at which point the valve closes.

### FEATURES AND BENEFITS

Hardened precision fitted spool and cage provides reliable, long life. A unibody cage construction provides very low hysteresis and reliable operation. All external carbon steel parts are plated for longer life against the elements. All cartridge valves are 100% functionally tested. Industry common cavity.

### SPECIFICATIONS

OPERATING PRESSURE: 5,000 PSI [350 Bar]  
PROOF PRESSURE: 10,000 PSI [700 Bar]  
FLOW: 1.0 GPM [3,8 L/M] nominal. See performance chart.  
INTERNAL LEAKAGE: 5 drops/min [.25 cc/m] @ 85% of crack pressure.  
DEFINITION OF CRACK: evident at 0.06 GPM [0.25 LPM]  
VALVE HOUSINGS: 2500 PSI [175 Bar] = Aluminum - Anodized.  
5000 PSI [350 Bar] = Steel - Unplated.  
OPERATING TEMPERATURE: -40° to +250° F. [-40° to +120° C.]  
OPERATING MEDIA: All general purpose hydraulic fluids such as MIL-H-5606, SAE-#10, SAE-#20, etc.  
INSTALLATION: No restriction.  
FILTRATION: 25 microns or better.  
SEAL KIT NUMBER: SKN-1022 for Buna "N".  
SKV-1022 for Viton.  
WEIGHT: 0.42 lbs [0,19 kg] cartridge only.  
VALVE CAVITY: #C1030, See Page 0-032.1.