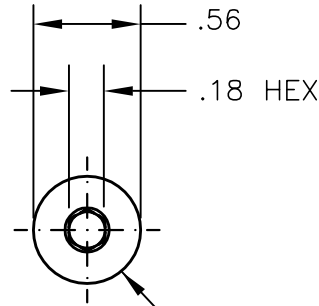
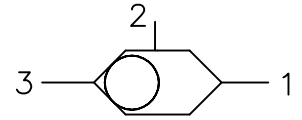
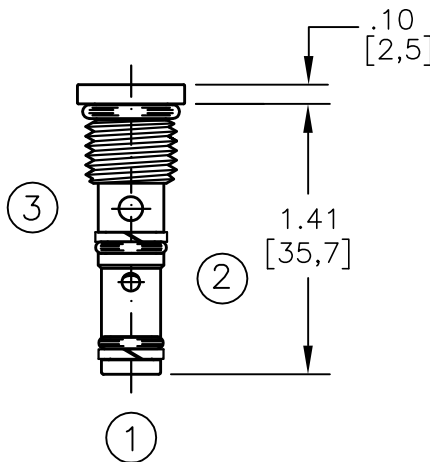




# SHUTTLE VALVE TWO-POSITION, THREE-WAY, BALL TYPE.

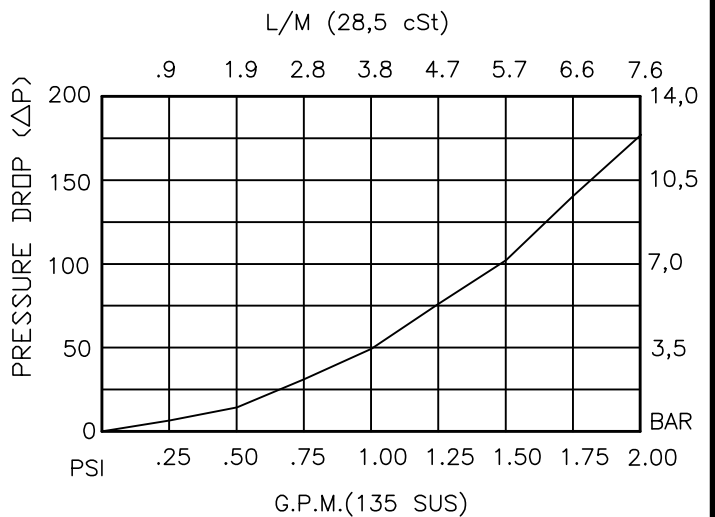


TORQUE to 10/12 Ft-Lb.  
[14/16 N-m]



**BDSV-04-X-3-0-00**

- BASIC \_\_\_\_\_
  - SIZE \_\_\_\_\_
  - 04 = 7/16"-20 UNF
  - SEALS \_\_\_\_\_
  - N = BUNA "N"
  - V = VITON
  - STYLE \_\_\_\_\_
  - 3 = 3 WAY
- PORTS  
00 = CARTRIDGE ONLY





## SHUTTLE VALVE TWO-POSITION, THREE-WAY, BALL TYPE.

### DESCRIPTION

This unit is a SCREW IN, CARTRIDGE TYPE, THREE PORTED, TWO POSITION, HYDRAULIC SHUTTLE VALVE.

### OPERATIONS

This valve senses the higher of the two input pressures port #1 or #3 and routes it to the output port #2.

### FEATURES AND BENEFITS

A steel ball and a sharp steel seat assures rugged and reliable performance.

All external carbon steel parts are plated for longer life against the elements.

All cartridge valves are 100% functionally tested.

Industry common cavity.

### SPECIFICATIONS

OPERATING PRESSURE: 5,000 PSI [350 Bar]

PROOF PRESSURE: 10,000 PSI [700 Bar]

FLOW: 1.5 GPM [6 l/m] nominal. See performance chart.

INTERNAL LEAKAGE: 5 drops/min maximum at 5,000 PSI.

VALVE HOUSINGS: 2500 PSI [175 Bar] = Aluminum - Anodized.

5000 PSI [350 Bar] = Steel - Unplated.

OPERATING TEMPERATURE: -40° to +250° F. [-40° to +120° C.]

OPERATING MEDIA: All general purpose hydraulic fluids such as MIL-H-5606, SAE-#10, SAE-#20, etc.

INSTALLATION: No restriction.

FILTRATION: 25 microns or better.

SEAL KIT NUMBER: SKN-0431 FOR BUNA "N".

SKV-0431 FOR VITON "V".

WEIGHT: 0.03 lb [.014kg] cartridge only.

VALVE CAVITY: #C0430, See Page 0-030.0.