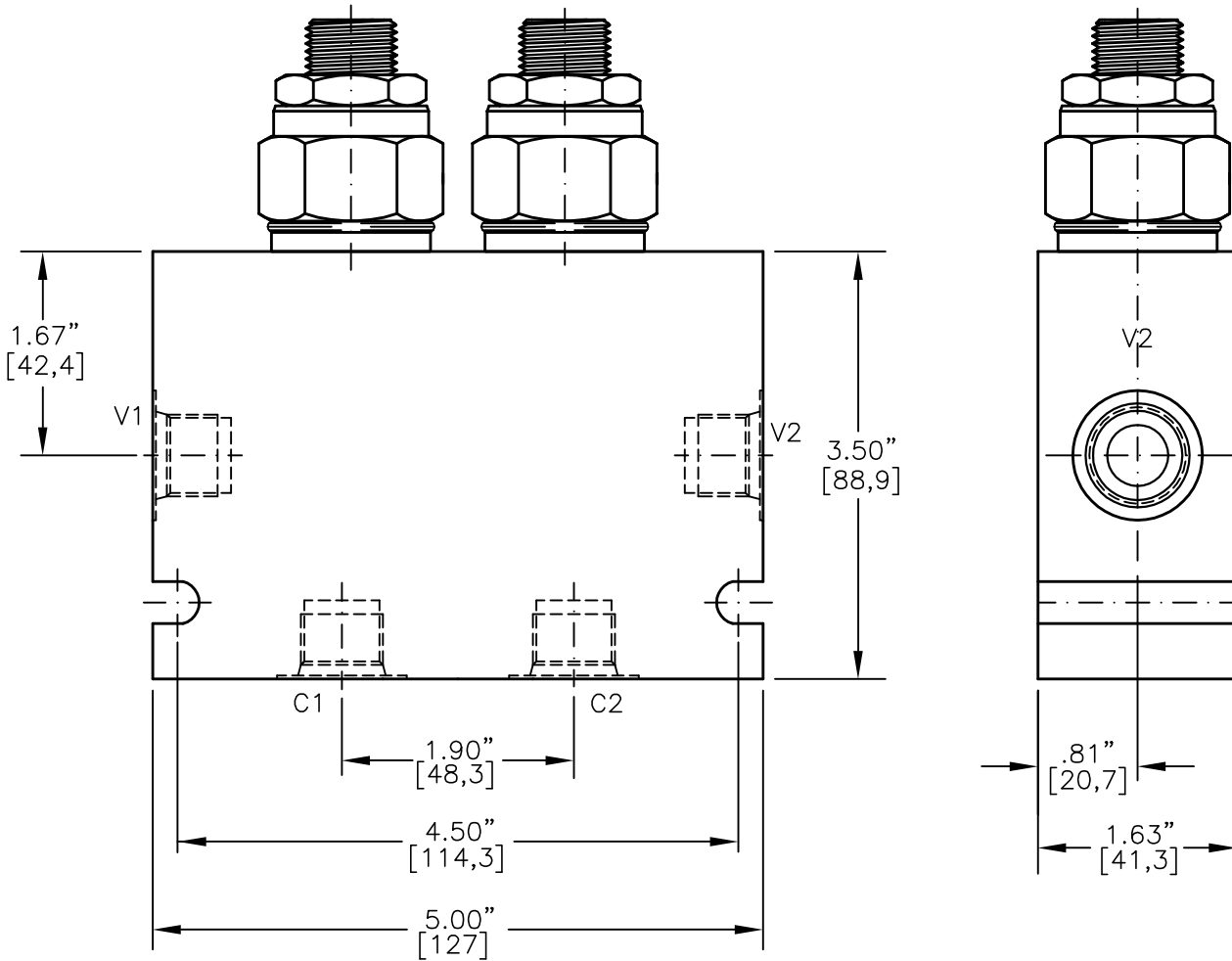
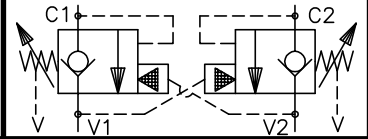




# DUAL COUNTERBALANCE VALVE POPPET TYPE, FREE REVERSE FLOW WITH VENTED PISTON



## DCBG-12-X-X-X-XX

BASIC

SIZE

12 = 1.062"-12 UNF

SEALS

N = BUNA "N"

V = VITON

ADJUSTMENT

S = ADJUSTING SCREW

C = CAPPED

T = TAMPERPROOF

PRESSURE RANGE

15 = 100 TO 1500 PSI

30 = 300 TO 3000 PSI

40 = 600 TO 4000 PSI

PORTS

06BX = G 3/4" BSPP

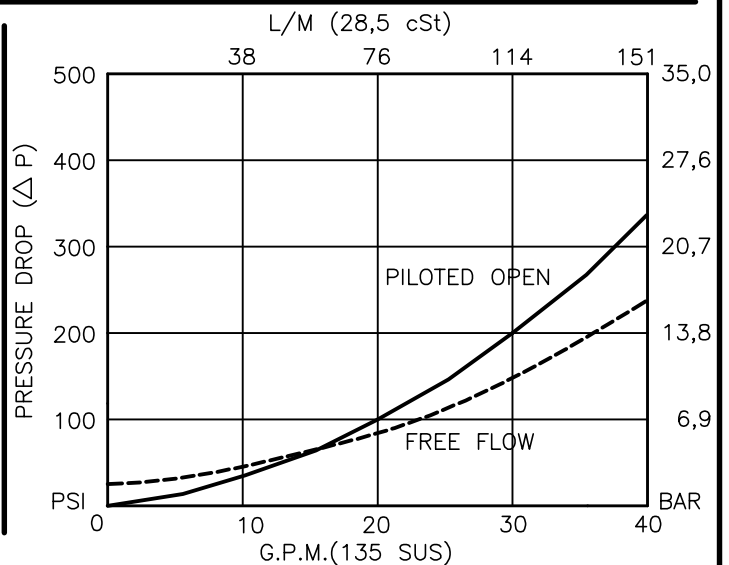
10TX = SAE - #10

12TX = SAE - #12

"A" - ALUM. HOUSING

"S" - STEEL HOUSING

FOR ADJUSTMENT CONTROL  
OPTIONS SEE PAGE 0-050.0





## DUAL COUNTERBALANCE VALVE POPPET TYPE, FREE REVERSE FLOW WITH VENTED PISTON

### DESCRIPTION

This unit consists of two CBPG cartridges in an inline housing. The cartridges are direct acting, screw in cartridge style, poppet type, adjustable, pilot assisted, hydraulic counterbalance valves.

### OPERATIONS

This valve controls moving load and preventing it from running ahead of the pump, locking the load in any position, it also provides static overload and thermal expansion protection.

This valve is a MODULATING DEVICE that allows free flow from port V1 to port C1 and V2 to C2 then blocks reverse flow until a pilot pressure INVERSELY PROPORTIONAL to the load pressure is sensed at pilot ports which are connected to ports V1 and V2 therefore modulating flow from port C1 or port C2.

### FEATURES AND BENEFITS

Leakproof screw adjustment.

Adjustment screw can not be backed out of the valve.

Overset protection – spring can not go solid.

Hardened precision fitted poppet & cage provides reliable, long life.

A unibody adapter cage construction provides very reliable operation.

Vented pilot piston spring chamber to atmosphere allows this valve to be used with a re-generative circuit.

All external carbon steel parts are plated for longer life against the elements.

Valve is available with screw, tamperproof and capped adjustments.

All cartridge valves are 100% functionally tested.

### SPECIFICATIONS

OPERATING PRESSURE: 4,000 PSI [276 Bar]

PROOF PRESSURE: 10,000 PSI [700 Bar]

FLOW: 35.0 GPM [132 L/M] nominal. See performance chart.

PILOT RATIO: 4 to 1

INTERNAL LEAKAGE: 5 drops/min @ 90% of crack pressure.

DEFINITION OF CRACK: evident at 0.06 GPM [0.25 LPM]

VALVE HOUSINGS: 2500 PSI [175 Bar] = Aluminum – Anodized.

5000 PSI [350 Bar] = Steel – Unplated.

OPERATING TEMPERATURE: -40° to +250° F. [-40° to +120° C.]

OPERATING MEDIA: All general purpose hydraulic fluids such as MIL-H-5606, SAE-#10, SAE-#20, etc.

INSTALLATION: No restriction.

FILTRATION: 25 microns or better.

SEAL KIT NUMBER: SKN-1228 for buna "N".

SKV-1228 for viton.

WEIGHT: 2.65 lbs [1,21 kg] Aluminum. 5.25 lbs [2,38] Steel.

VALVE CAVITY: #C1225, See Page 0-023.0.