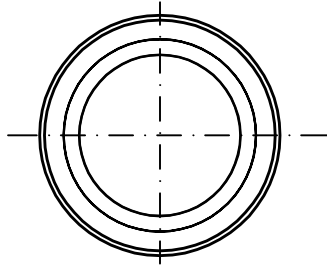
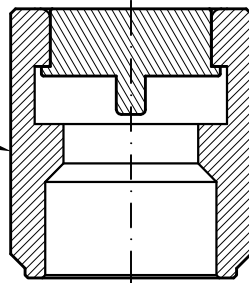




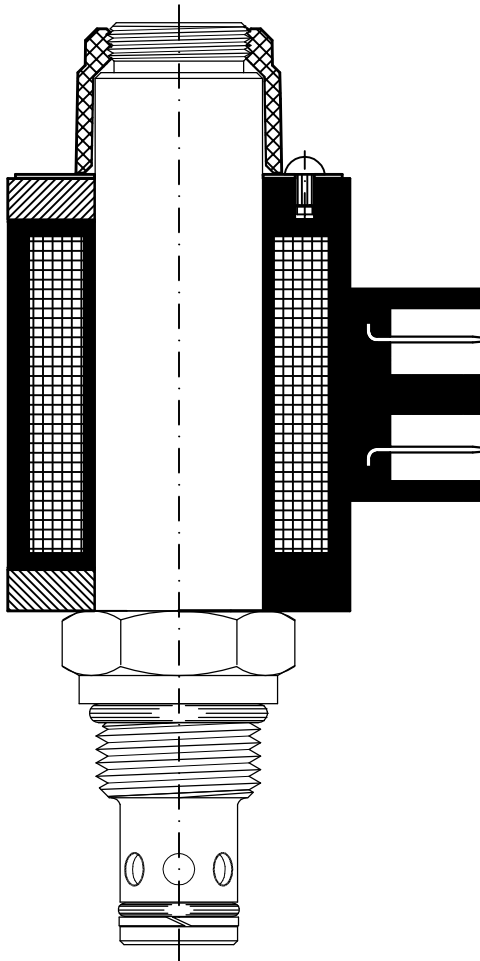
MANUAL OVER-RIDE BUTTON



ASSEMBLY #60193



THIS BUTTON FITS ONTO ALL PUSH TYPE 10,12&16 SIZE SOLENOID VALVES.



ASSEMBLY INSTRUCTIONS:

1. REMOVE PLASTIC NUT.
2. INSTALL MANUAL OVER-RIDE BUTTON 60193 (DO NOT OVERTORQUE).