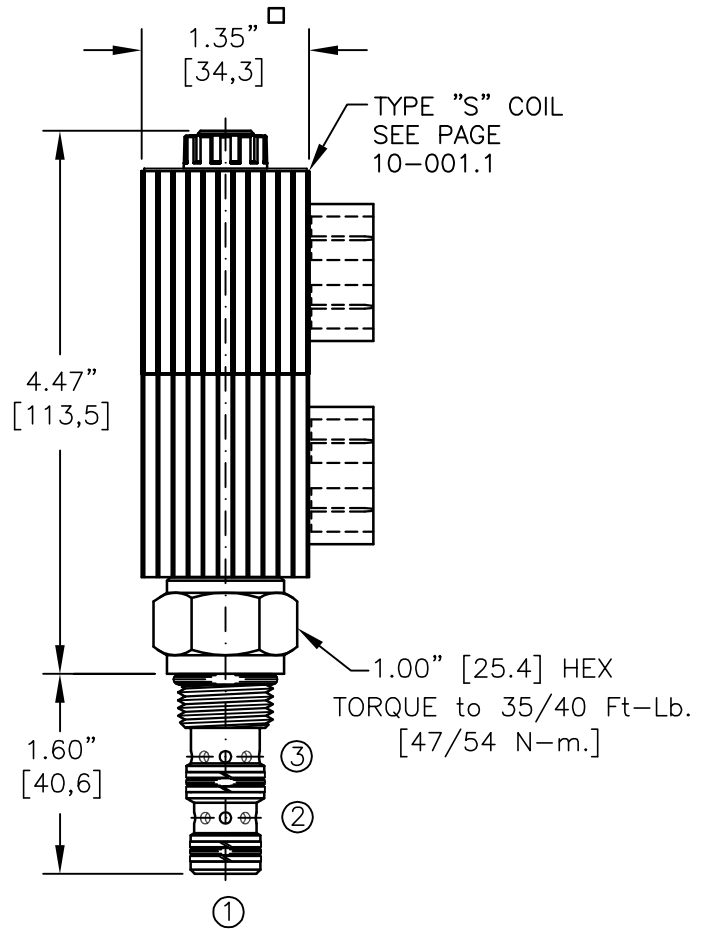
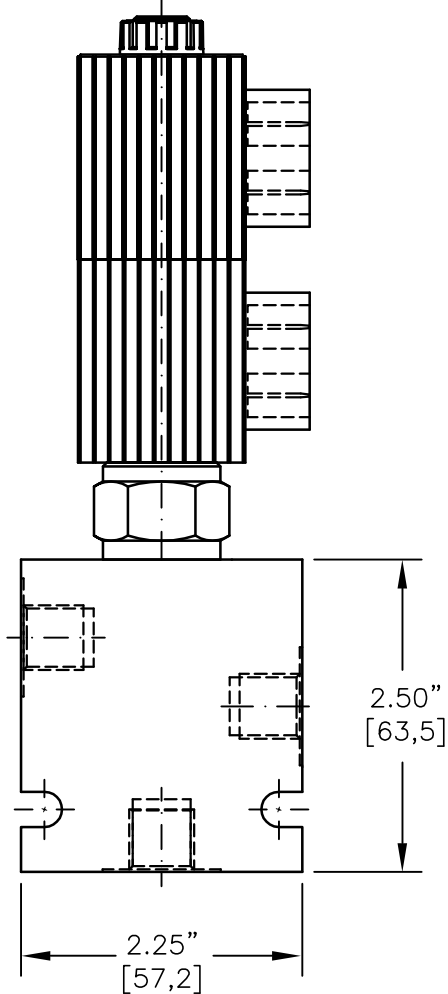
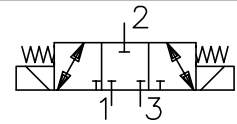




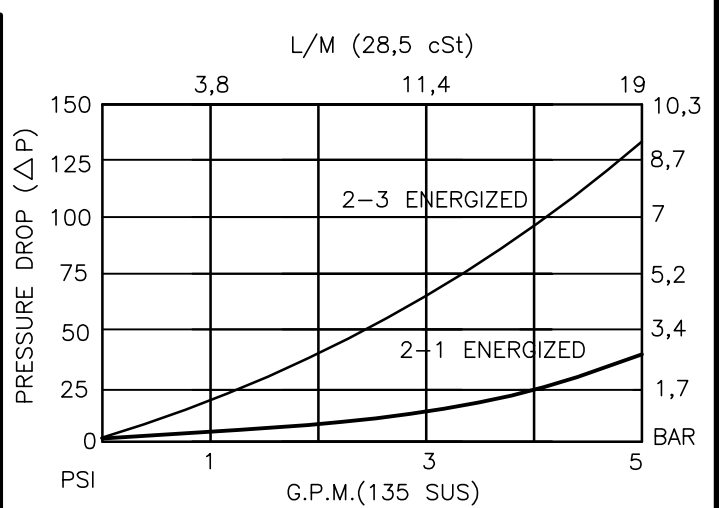
BIDIRECTIONAL CONTROL VALVE, 3-WAY 3-POSITION, SLIDING SPOOL TYPE



NOTES:

1. FOR ALUMINUM OR STEEL VALVE HOUSING CONFIGURATIONS SEE PAGE 0-031.1
2. SOLENOIDS AVAILABLE WITH DIODES - CONSULT FACTORY.
3. FOR "AC" COILS USE RECTIFIED DIN CONNECTOR 20828.

EMBV-08-X-3J-X-XXX X	
BASIC	TERMINALS
SIZE	L=18GA. 24" LEADS
08 = 3/4"-16UNF	T=SPADE TERM.
SEALS	B=BOLT TERM.
N = BUNA "N"	G=DIN43650
V = VITON	W=WEATHER-PACK
TYPE	D=DEUTSCH-DT04-2P
3J = "J" SPOOL	M=METRI-PACK CONN.
3-WAY, 3-POSITION	VOLTAGE
AMPS	12D = 12 VDC 1.8
PORTS	24D = 24 VDC .9
0 = CARTRIDGE ONLY	36D = 36 VDC .6
02BX = G 1/4" BSSP	48D = 48 VDC .5
06TX = SAE - #6	115D = 115 VDC .2
"A" = ALUM. HOUSING	
"S" = STEEL HOUSING	





BIDIRECTIONAL CONTROL VALVE, 3-WAY 3-POSITION, SLIDING SPOOL TYPE

DESCRIPTION

This unit is a THREE-WAY, THREE POSITION, cartridge type, spool type, solenoid operated, directional control valve.

OPERATIONS

In the center condition, this valve allows no flow between ports 1, 2 and 3.

When upper coil is energized, the rod pulls the spool and allows flow between ports 2 and 1; blocking port 3.

When lower coil is energized, the rod pushes the spool and allows flow between ports 2 and 3; blocking port 1.

FEATURES AND BENEFITS

Continuous-duty, very low heat rise & waterproof solenoid coil.

Interchangeable solenoid coils & terminations options available.

Hardened precision fitted spool & sleeve provides reliable, long life.

Very efficient, wet-armature solenoid core tube construction.

All external carbon steel parts are plated for longer life against the elements.

All cartridge valves are 100% functionally tested.

Industry common cavity.

SPECIFICATIONS

OPERATING PRESSURE: 5,000 PSI [350 Bar]

PROOF PRESSURE: 10,000 PSI [700 Bar]

FLOW: 5.0 GPM [19 l/m] See performance chart.

INTERNAL LEAKAGE: 10 cu.in/min [164 cc/m] @ 5,000 PSI [350 Bar]

VALVE HOUSINGS: 2500 PSI [175 Bar] = Aluminum - Anodized.

5000 PSI [350 Bar] = Steel - Unplated.

OPERATING TEMPERATURE: -40° to +250° F. [-40° to +120° C.]

OPERATING MEDIA: All general purpose hydraulic fluids such as MIL-H-5606, SAE-#10, SAE-#20, etc.

RESPONSE TIME: First indication of change in pressure with 100% voltage supplied @ 80% of nominal flow rating.

* Pull-in: 50 ms

* Drop-Out: 50 ms

SEAL KIT: SKN-0832 Buna "N"

SKV-0832 Viton

INSTALLATION: No restrictions.

WEIGHT: 1.95 lb [.88 kg] cartridge with coil only.

VALVE CAVITY: #C0830, See Page 0-031.0.