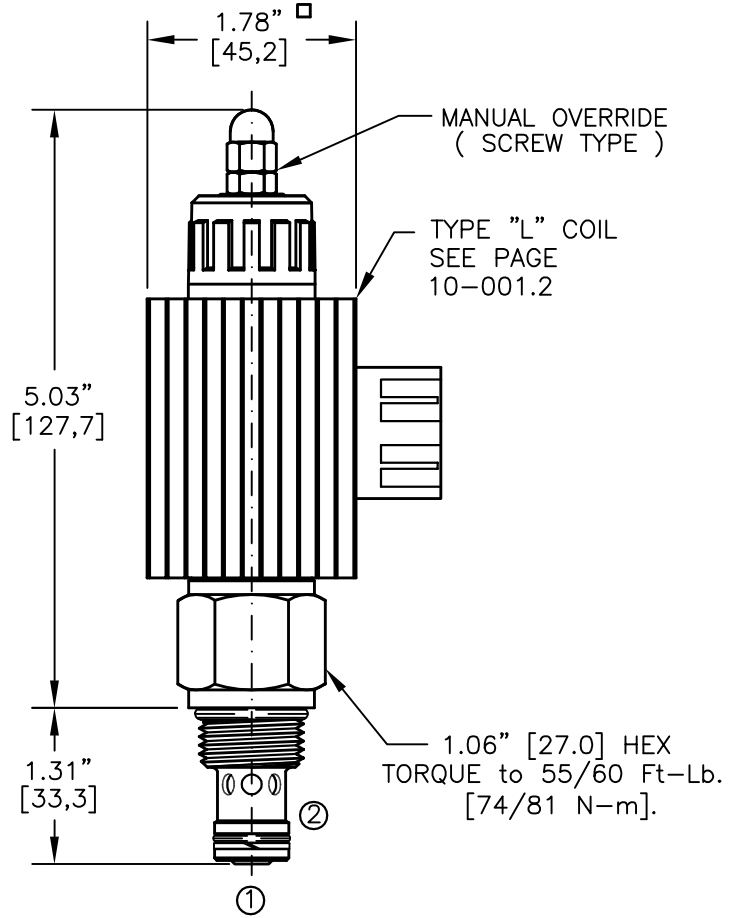
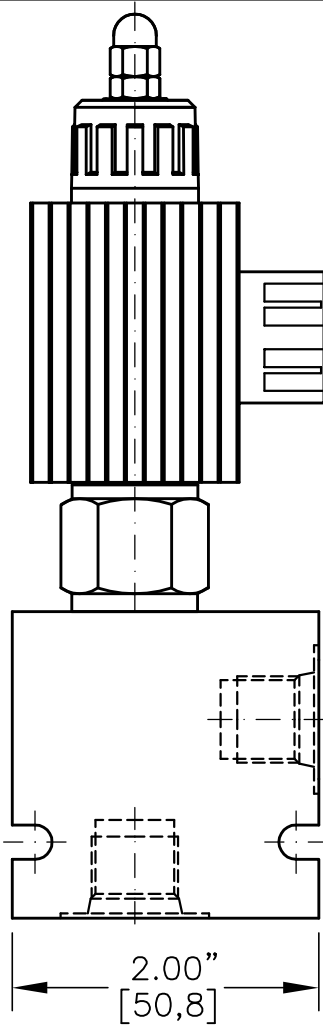
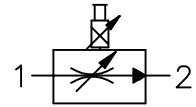




ELECTRO-HYDRAULIC, PROPORTIONAL, PRESSURE COMP, FLOW CONTROL VALVE.

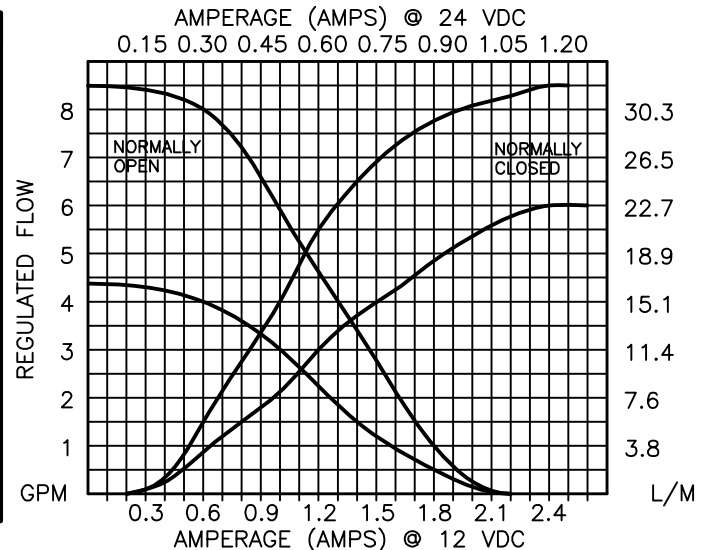


NOTES:

- 1. FOR ALUMINUM OR STEEL VALVE HOUSING CONFIGURATIONS SEE PAGE 0-012.1
- 2. SOLENOIDS AVAILABLE WITH DIODES - CONSULT FACTORY.

EPFI-10-X-X-XX-X-X-XXX X

BASIC	TERMINALS
SIZE	L=18GA. 24" LEADS
10 = 7/8"-14UNF	T=SPADE TERM.
SEALS	B=BOLT TERM.
N = BUNA "N"	G=DIN43650
V = VITON	W=WEATHER-PACK
STYLE	D=DEUTSCH-DT04-2P
C = NORMALLY CLOSED	M=METRI-PACK CONN.
O = NORMALLY OPEN	VOLTAGE AMPS
REGULATED FLOW	12D = 12 VDC 3.00
04 = 0 TO 4.0 GPM	24D = 24 VDC 1.50
08 = 0 TO 8.0 GPM	ADJUSTMENT OPTIONS
	0 = NONE
	M = MANUAL OVERRIDE
	PORTS
	0 = CARTRIDGE ONLY
	02BX = G 1/4" BSPP
	06BX = G 3/8" BSPP
	06TX = SAE - #6
	08TX = SAE - #8
	"A" = ALUM. HOUSING
	"S" = STEEL HOUSING





PROPORTIONAL, PRESSURE COMPENSATED, FLOW CONTROL VALVE.

DESCRIPTION

This valve is a cartridge style, electro-hydraulic, proportional, in-line (RESTRICTIVE) type, pressure compensated, hydraulic flow control. Regulated flow 8.0 GPM [30,2 L/M] max. is proportional to the current input regardless of load or system pressure.

OPERATIONS

This unit is a direct acting (NO PILOT FLOW), electro hydraulic, proportional, pressure compensated flow control valve. When the coil is energized the armature moves the metering orifice open against a precision bias spring varying the flow. A pressure compensatory spool (HYDROSTAT) modulates the flow at 100 PSI/6,9 Bar delta "P" providing the valve with a constant regulated flow regardless of load or system pressure. For the normally closed product when the current is increased to the coil the flow will increase. For the normally open product as the current is increased to the coil the flow will decrease. IN THE EVENT OF POWER FAILURE THE NORMALLY CLOSED VALVE WILL CLOSE AND THE NORMALLY OPEN VALVE WILL OPEN.

FEATURES AND BENEFITS

Continuous-duty, very low heat rise & waterproof solenoid coil.
Interchangeable solenoid coils & termination options available.
Hardened precision fitted spool & sleeve provides reliable, long life.
Very efficient wet – armature solenoid core tube construction.
All external carbon steel parts are plated for longer life against the elements.
All cartridge valves are 100% functionally tested.

SPECIFICATIONS

OPERATING PRESSURE: 5,000 PSI [350 Bar]
PROOF PRESSURE: 10,000 PSI [700 Bar]
REGULATED FLOW: 8.0 GPM [30,2 l/m] Max. See performance chart.
INTERNAL LEAKAGE: 20/40 in³/min [328/655 cc/m]@3/5K PSI [175/350 Bar]
VALVE HOUSINGS: 2500 PSI [175 Bar] = Aluminum – Anodized.
5000 PSI [350 Bar] = Steel – Unplated.
OPERATING TEMPERATURE: -40° to +250° F. [-40° to +120° C.]
OPERATING MEDIA: All general purpose hydraulic fluids such as
MIL-H-5606, SAE-#10, SAE-#20, etc.
RESPONSE: The most efficient method to control this valve is with
current control and a 50 Hz dither.
POWER REQUIREMENTS: 12 VDC, Operating current 0.2 to 2.2 AMPS.
24 VDC, Operating current 0.1 to 1.1 AMPS.
SEAL KIT: SKN-1022 Buna "N"
SKV-1022 Viton
INSTALLATION: No restrictions.
WEIGHT: 1.9 lb [0,86 kg] cartridge with coil only.
VALVE CAVITY: #C1020, See Page 0-012.0.