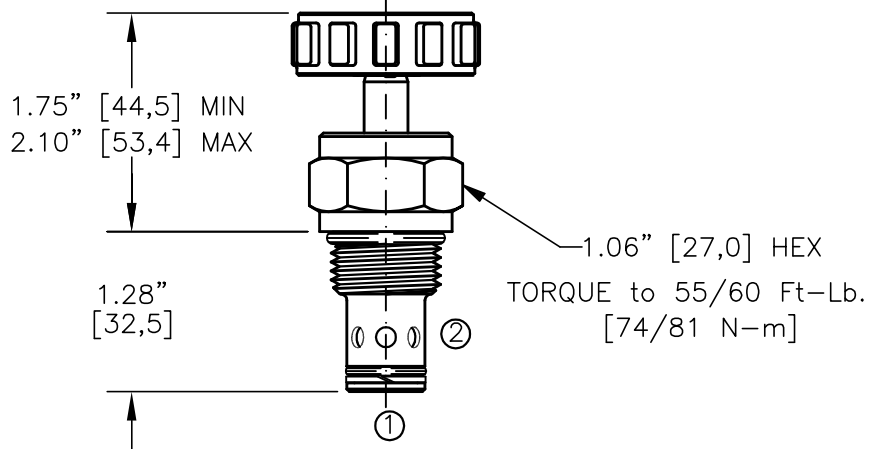
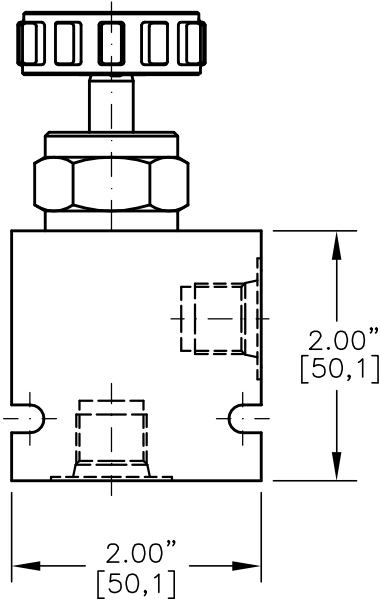
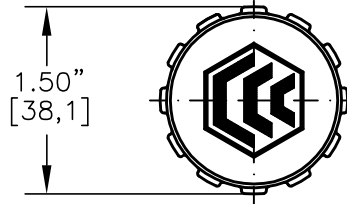
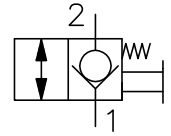
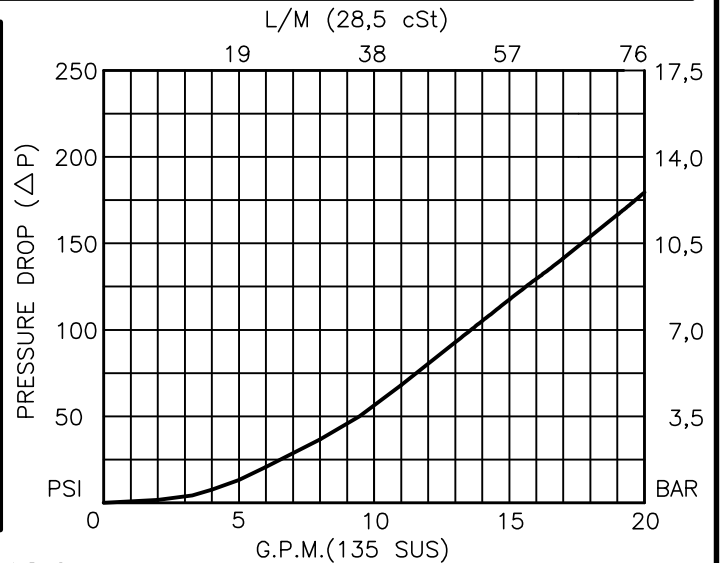
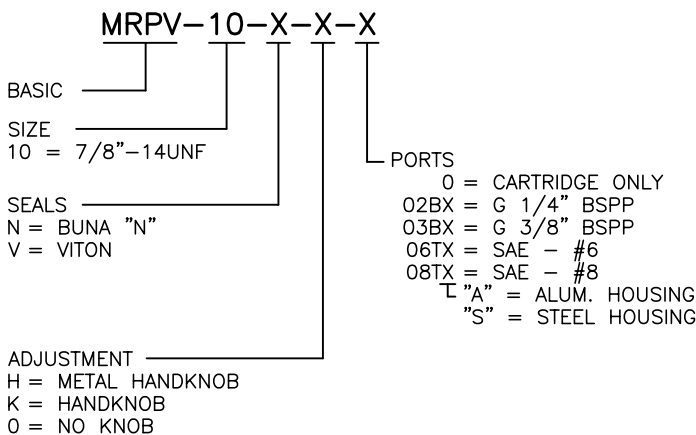




MANUAL RELEASE VALVE
PULL TO OPEN



FOR ALUMINUM OR STEEL VALVE HOUSING CONFIGURATIONS SEE PAGE 0-012.1



FOR ADJUSTMENT CONTROL
OPTIONS SEE PAGE 0-050.1



MANUAL RELEASE VALVE PULL TO OPEN

DESCRIPTION

This unit is a SCREW IN, cartridge type, guided poppet, spring biased closed, pull to open, hydraulic manual release valve.

OPERATIONS

This valve allows free flow from port 1 to port 2 at 175 PSI [12,0 BAR] and blocks flow from port 2 to port 1 or holding a load.

FEATURES AND BENEFITS

Low effort leakproof valve stem; knob is optional.
Pull to open mechanical effort at rated pressure is 17.5 LBS [8,0 KG.]
All external carbon steel parts are plated for longer life against the elements.
All cartridge valves are 100% functionally tested.
Industry common cavity.

SPECIFICATIONS

OPERATING PRESSURE: 5,000 PSI [350 Bar]
PROOF PRESSURE: 10,000 PSI [700 Bar]
FLOW: 18.0 GPM [70 l/m] nominal. See performance chart.
INTERNAL LEAKAGE: 5 drops per minute maximum @ 5,000 PSI (350 Bar)
VALVE HOUSINGS: 2500 PSI [175 Bar] = Aluminum - Anodized.
5000 PSI [350 Bar] = Steel - Unplated.
OPERATING TEMPERATURE: -40° to +250° F. [-40° to +120° C.]
OPERATING MEDIA: All general purpose hydraulic fluids such as
MIL-H-5606, SAE-#10, SAE-#20, etc.
INSTALLATION: No restrictions.
SEAL KIT: SKN-1021 Buna "N".
SKV-1021 Viton.
WEIGHT: .31 lb [.14 kg] cartridge only.
VALVE CAVITY: #C1020, See Page 0-012.0.