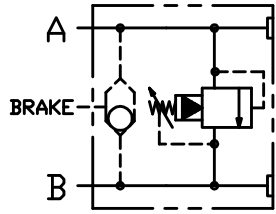
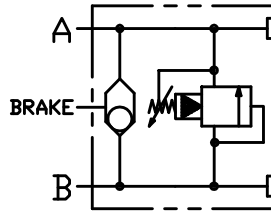




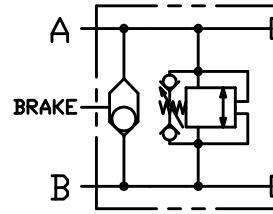
MOTOR MOUNT RELIEF VALVE



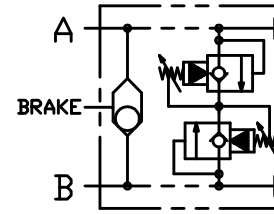
TYPE "A"
"E"/SHUTTLE



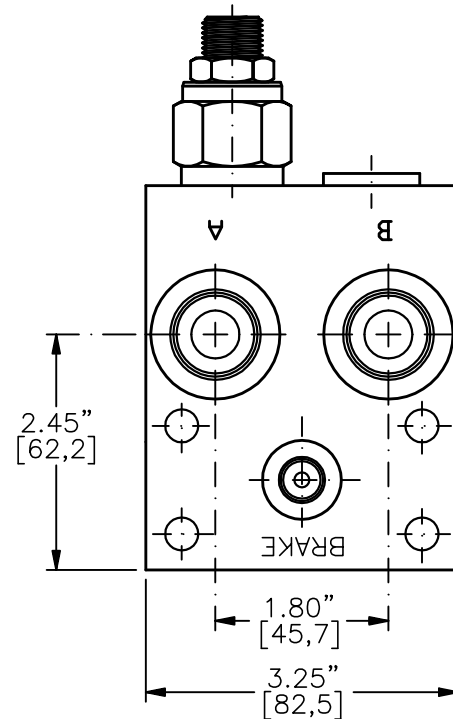
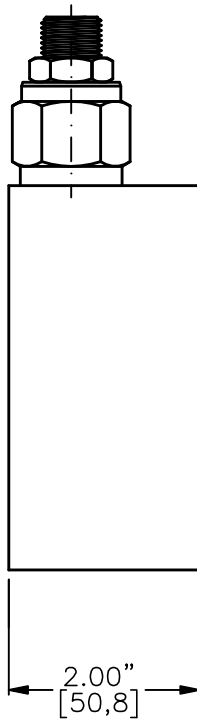
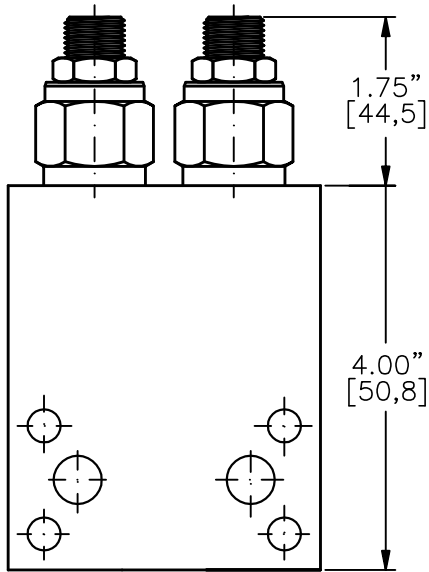
TYPE "B"
"F"/SHUTTLE



TYPE "C"
"G"/SHUTTLE



TYPE "D"
"H"/SHUTTLE



MMRV-10-X-X-X-10TA-XX-XX

BASIC
SIZE
10 = 7/8"-14UNF
SEALS
N = BUNA "N"
V = VITON
ADJUSTMENT
C = CAPPED
S = SCREW
T = TAMPERPROOF

USE ON
"D" & "H" ONLY

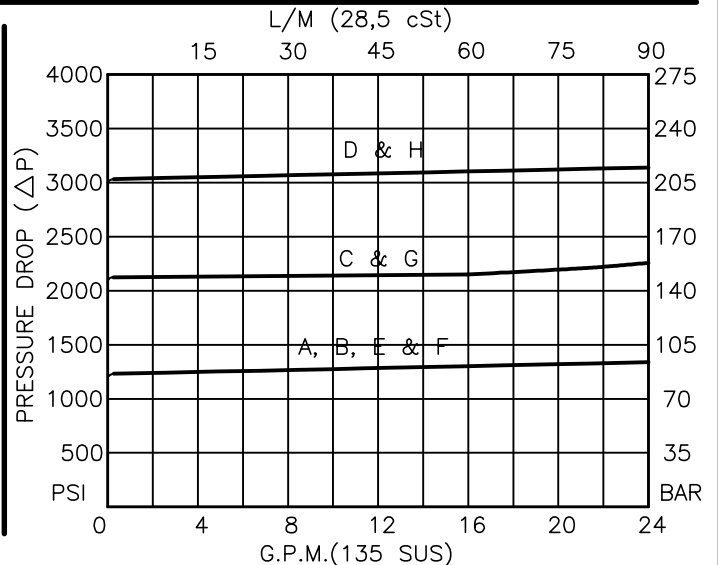
PRESSURE RANGE
15 = 0 TO 1500 PSI
30 = 0 TO 3000 PSI

PORTS
10TA = SAE - #10

OTHER PORTS AVAILABLE
UPON REQUEST

TYPE
"A", "B", "C", "D", "E", "F", "G" & "H"
(SEE OTHER SIDE PAGE 13-110.1)

FOR ADJUSTMENT CONTROL
OPTIONS SEE PAGE 0-050.0





MOTOR MOUNT RELIEF VALVE

DESCRIPTION

THIS UNIT IS A CROSS PORT RELIEF VALVE TO MOUNT ON TO A LOW SPEED HIGH TORQUE HYDRAULIC MOTOR SUCH AS EATON, WHITE, PARKER (HPI & ROSS), DANFOSS, ETC. WITH MANIFOLD MOUNTING DIMENSIONS SPECIFIED ON PAGE 13-010.0

OPERATIONS

TYPE	PORT RELIEFS	CARTRIDGE VALVE
A	"A" TO "B"	RVPS-10-X-X-0-XX
B	"B" TO "A"	RVPS-10-X-X-0-XX
C	"A" TO "B" & "B" TO "A" SAME PRESSURE SETTING	RVBD-10-X-X-0-XX
D	"A" TO "B" & "B" TO "A" INDEPENDENT SETTINGS	RVPP-10-X-X-0-XX
E	"A" TO "B" (SAME AS "A")	WITH BRAKE SHUTTLE
F	"B" TO "A" (SAME AS "B")	WITH BRAKE SHUTTLE
G	"A" TO "B" & "B" TO "A" (SAME AS "C")	WITH BRAKE SHUTTLE
H	"A" TO "B" & "B" TO "A" (SAME AS "E")	WITH BRAKE SHUTTLE

SPECIFICATIONS

OPERATING PRESSURE: 3000 PSI [210 BAR].

OPERATING TEMPERATURE: -40° TO +250° F. [-40° TO +120° C.].

OPERATING MEDIA: ALL GENERAL PURPOSE HYDRAULIC FLUIDS.

BRAKE PORT WHEN REQUIRED IS SAE-#4 (7/16"-20 UNF THD.)

MATERIAL: ANODIZED ALUMINIUM ALLOY BODY.

OPTIONAL: PROVISIONS CAN BE MADE TO CLEAR THE MOUNTING BOLT ON THE SAE "A" FLANGE MOUNT MOTOR WITH MOUNTING HOLE ON THE SAME SIDE AS THE WORKING PORTS "A" AND "B".