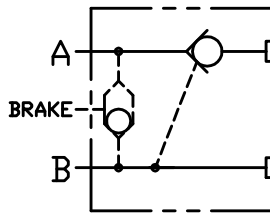
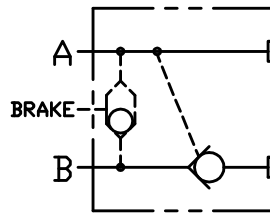




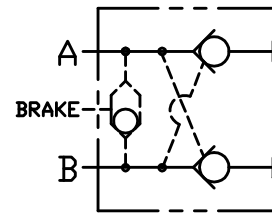
MOTOR MOUNT PILOTED CHECK



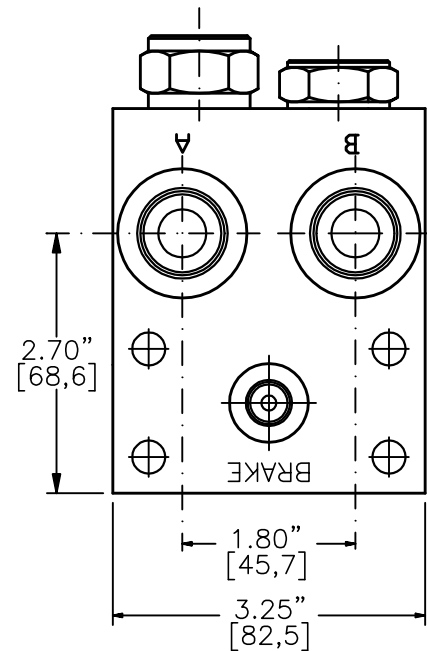
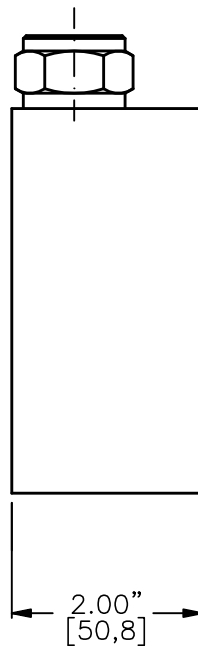
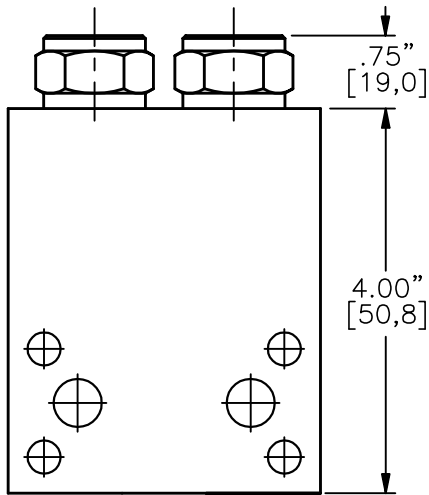
TYPE "A"
"D"/SHUTTLE



TYPE "B"
"E"/SHUTTLE



TYPE "C"
"F"/SHUTTLE



MMPC-10-X-X-X-10TA-XXX

BASIC

SIZE

10 = 7/8"-14UNF

SEALS

N = BUNA "N"

V = VITON

ADJUSTMENT

F = FIXED (STANDARD)

M = MANUAL LOAD RELEASE

CRACK PRESSURE

010 = 10 PSI

030 = 30 PSI

060 = 60 PSI

PORTS

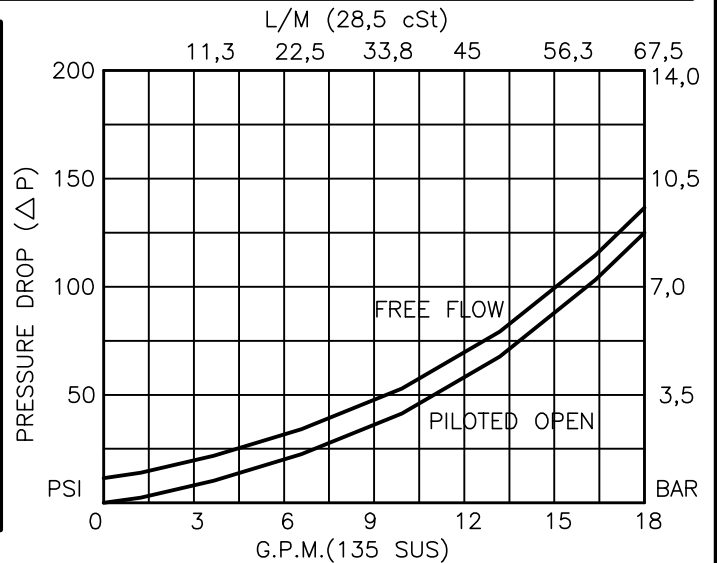
10TA = SAE - #10

OTHER PORTS AVAILABLE
UPON REQUEST

TYPE

"A", "B", "C", "D", "E" & "F"

(SEE OTHER SIDE PAGE 13-120.1)





MOTOR MOUNT PILOTED CHECK

DESCRIPTION

THIS UNIT IS A PILOT OPERATED CHECK VALVE TO MOUNT ON TO A LOW SPEED HIGH TORQUE HYDRAULIC MOTOR SUCH AS EATON, WHITE, PARKER (HPI & ROSS), DANFOSS, ETC. WITH MANIFOLD MOUNTING DIMENSIONS SPECIFIED ON PAGE 13-010.0

SEE PAGE 1-102.0 FOR MORE INFORMATION ON PERFORMANCE DATA AND OTHER OPTIONS OF THE CARTRIDGE #POCI-10-N-F-0-XX.

OPERATIONS

TYPE	CHECKED PORT	CARTRIDGE VALVE
A	"A"	POCI-10-X-X-0-XX
B	"B"	POCI-10-X-X-0-XX
C	"A" & "B"	POCI-10-X-X-0-XX
D	"A"	WITH BRAKE SHUTTLE
E	"B"	WITH BRAKE SHUTTLE
F	"A" & "B"	WITH BRAKE SHUTTLE

SPECIFICATIONS

OPERATING PRESSURE: 3000 PSI [210 BAR].

OPERATING TEMPERATURE: -40° TO +250° F. [-40° TO +120° C.].

OPERATING MEDIA: ALL GENERAL PURPOSE HYDRAULIC FLUIDS.

BRAKE PORT WHEN REQUIRED IS SAE-#4 (7/16"-20 UNF THD.)

MATERIAL: ANODIZED ALUMINIUM ALLOY BODY.

PILOT RATIO: 3 TO 1.

OPTIONAL: PROVISIONS CAN BE MADE TO CLEAR THE MOUNTING BOLT ON THE SAE "A" FLANGE MOUNT MOTOR WITH MOUNTING HOLE ON THE SAME SIDE AS THE WORKING PORTS "A" AND "B".