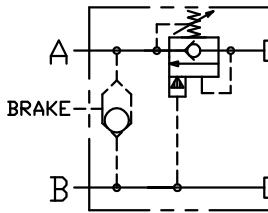
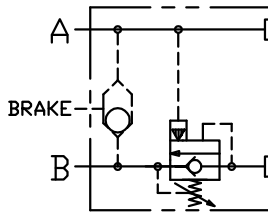




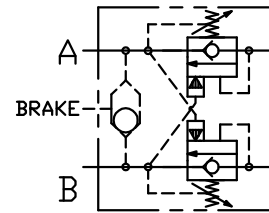
MOTOR MOUNT COUNTERBALANCE



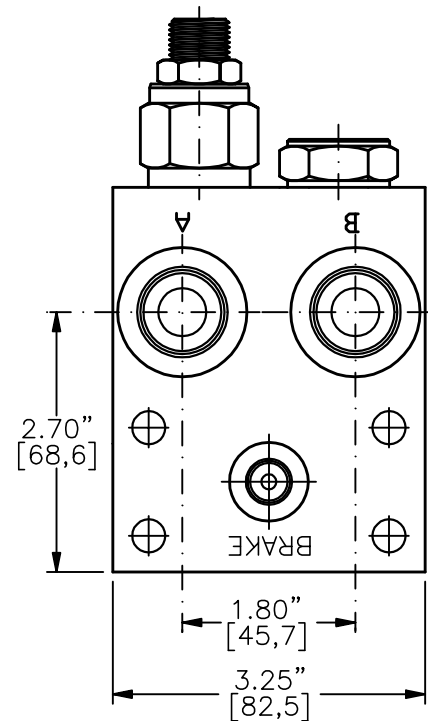
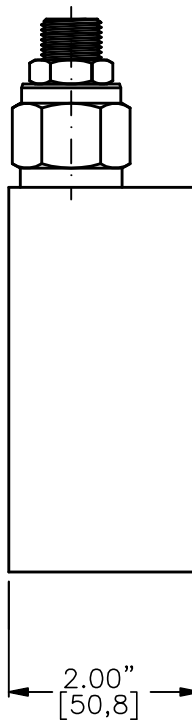
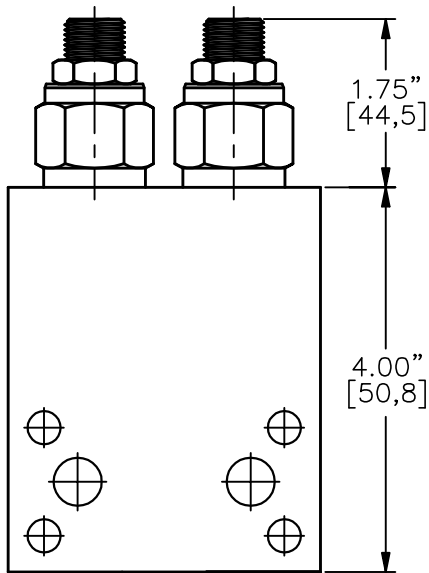
TYPE "A"
"D"/SHUTTLE



TYPE "B"
"E"/SHUTTLE



TYPE "C"
"F"/SHUTTLE



MMCB-10-X-X-X-10TA-XX

BASIC
 SIZE
 10 = 7/8"-14UNF

SEALS
 N = BUNA "N"
 V = VITON

ADJUSTMENT
 C = CAPPED
 S = SCREW
 T = TAMPERPROOF

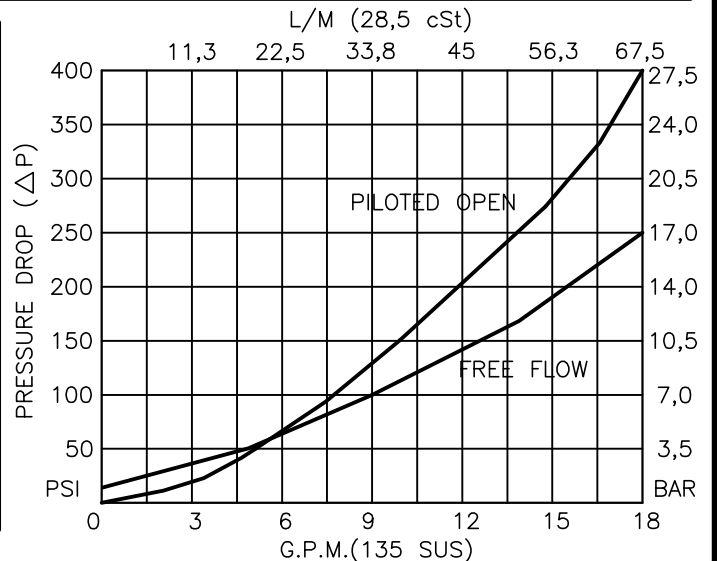
PRESSURE RANGE
 15 = 100 TO 1500 PSI
 30 = 300 TO 3000 PSI

PORTS
 10TA = SAE - #10

OTHER PORTS AVAILABLE
 UPON REQUEST

TYPE
 "A", "B", "C", "D", "E" & "F"
 (SEE OTHER SIDE PAGE 13-130.1)

FOR ADJUSTMENT CONTROL
 OPTIONS SEE PAGE 0-050.0





MOTOR MOUNT COUNTERBALANCE

DESCRIPTION

THIS UNIT IS A COUNTERBALANCE VALVE TO MOUNT ON TO A LOW SPEED HIGH TORQUE HYDRAULIC MOTOR SUCH AS EATON, WHITE, PARKER (HPI & ROSS), DANFOSS, ETC. WITH MANIFOLD MOUNTING DIMENSIONS SPECIFIED ON PAGE 13-010.0

SEE PAGE 8-052.0 FOR MORE INFORMATION ON PERFORMANCE DATA AND OTHER OPTIONS OF THE CARTRIDGE #CBPA-10-N-S-0-XX.

OPERATIONS

TYPE	PORT COUNTERBALANCED	CARTRIDGE VALVE
A	"A"	CBPA-10-X-X-0-XX
B	"B"	CBPA-10-X-X-0-XX
C	"A" & "B"	CBPA-10-X-X-0-XX
D	"A" E	WITH BRAKE SHUTTLE
E	"B"	WITH BRAKE SHUTTLE
F	"A" & "B"	WITH BRAKE SHUTTLE

SPECIFICATIONS

OPERATING PRESSURE: 3000 PSI [210 BAR].

OPERATING TEMPERATURE: -40 TO +250 F [-40 TO +120 C].

OPERATING MEDIA: ALL GENERAL PURPOSE HYDRAULIC FLUIDS.

BRAKE PORT WHEN REQUIRED IS SAE-#4 (7/16"-20 UNF THD.)

MATERIAL: ANODIZED ALUMINIUM ALLOY BODY.

PILOT RATIO: 4 TO 1.

OPTIONAL: PROVISIONS CAN BE MADE TO CLEAR THE MOUNTING BOLT ON THE SAE "A" FLANGE MOUNT MOTOR WITH MOUNTING HOLE ON THE SAME SIDE AS THE WORKING PORTS "A" AND "B".